

Clam River Haven  
11536 Mulber Dr. (Mulder Dr. if using GPS)  
Marion, MI 49665

Contact: Linda Helfmann at (586) 764-9188

Welcome to the Clam River Haven. We hope your stay is enjoyable and stress-free. The rustic surroundings provide comfort with a lived-in feeling and still provides important creature-comfort amenities such as central air conditioning and forced air heat. The Clam River Haven has a beautiful view of the Clam River with 250 feet of river frontage. The deck, dock and stairs offer safe access



to the river for fishing, wading in the river or kayaking. The Clam River runs into the Muskegon River and is spring fed and very clean. An abundance of wildlife are all around, bald eagles, woodpeckers humming- birds, blue herons, muskrats, and chipmunks. Tree squirrels can be seen jumping from tree to tree. Deer are often

wandering the two-acre property.

Please make this your home during your visit and enjoy the quiet surroundings and the nature all around you.



## Table of Contents

|  | <u>Page</u> |
|--|-------------|
| Assistance   |             |
| - Questions/Concerns .....                           | 7           |
| - Kayak/canoe/inner tube transport .....             | 7           |
| - Emergency and Non-Emergencies                      |             |
| o Alarm System (see Alarm Security System, pg. 40)   |             |
| o 9-1-1 for Fire / Police / Ambulance .....          | 7           |
| o First Aid .....                                    | 7           |
| o Hospital .....                                     | 7           |
| o Medical - Urgent care .....                        | 8           |
| o Medical - Pharmacy .....                           | 8           |
| o Poison Control .....                               | 8           |
| o Police (non-emergencies) .....                     | 8           |
| o Tornado or Severe Thunderstorm Warning .....       | 9           |
| Check in / Check Out .....                           | 10          |
| - Closing the Clam River Haven .....                 | 10          |
| Activities   |             |
| - Indoor Fun   |             |
| - Activities to Do .....                             | 11          |
| - Bird and Tree Squirrel Watching .....              | 11          |
| - Television and Video Games .....                   | 12          |
| - Bose Stereo .....                                  | 12          |
| - Card Games, Pick Up Sticks and Jacks               |             |
| o Crazy Wild Rummy .....                             | 13          |
| o Kings Corners (Solitaire) .....                    | 16          |
| o Poker Dice .....                                   | 18          |
| o Pick Up Sticks .....                               | 19          |
| - Outdoor Fun  |             |
| - Bonfires .....                                     | 20          |
| - Corn Hole, Darts, Horseshoes, Volleyball, Football |             |

- and Frisbee ..... 20
- Crayfish, Catching and Eating ..... 21
- Driveway Chalk and Bubbles ..... 24
- Firearms ..... 24
- Fireworks ..... 24
- Fishing on the Clam River ..... 25
- Frogs and Fireflies ..... 27
- Golf Cart ..... 27
- Hobo Pies ..... 28
- Kayaks, Canoes and Inner Tubes ..... 31
- Morel Mushroom Hunting ..... 33
- Nature Viewing ..... 35
- River Splashing ..... 35
- Star Gazing ..... 36
- Sunbathing ..... 37
- Activities a Short Drive Away
- Airports ..... 38
- Canoe Rentals ..... 38
- Casino ..... 38
- Golf Courses ..... 38
- Horseback Riding (Ewart, MI) ..... 39
- Hunting Opportunities (Clare County) ..... 40
- Sightseeing
  - Amish Shopping ..... 42
  - Brinks Family Creamery ..... 43
  - Wayside Chapel ..... 44
  - Deer and Other Animals ..... 45
- Snowmobile and ORV Rentals ..... 46
- Snowmobile and ORV Trails near Leota ..... 46
- Ski Resorts ..... 50
- Walking and Hiking ..... 50
- Zipline ..... 50

|  |    |
|--|----|
| Alarm Security System .....                                    | 51 |
| Communications and Media                                       |    |
| - Phone Service .....  | 53 |
| - Mobile Calling Coverage .....                                | 53 |
| - Internet .....   | 54 |
| - Radio Stations .....   | 55 |
| - Television Stations (Dish Network) .....                     | 56 |
| Directions from the Clam River Haven to:                       |    |
| - Marion .....   | 57 |
| - Falmouth .....   | 58 |
| - Leota .....  | 59 |
| - Vogel Center .....   | 59 |
| - McBain .....   | 61 |
| - Hospital - Munson Healthcare Cadillac Hospital, Cadillac ... | 62 |
| - The "Loop" .....   | 63 |
| - Driving Directions to spot Deer at Dusk .....                | 64 |
| - 40 Minute Tube Ride down the Clam River .....                | 65 |
| - 20 Minute Tube Ride down the Clam River .....                | 66 |
| - 2 Hour Kayak/Canoe Ride down the Clam River .....            | 67 |
| - 3-3.5 Hour Kayak Ride (Starting at Clam River Haven) .....   | 69 |
| - 5 Hour Kayak Ride (Starting at Clam River Haven) .....       | 70 |
| Other Info   |    |
| - Air Conditioning, Furnace, Heaters and Fans .....            | 71 |
| - Electricity .....  | 71 |
| - Coffee, Spices, Staples and Kitchen Equipment .....          | 71 |
| - Insect Repellant .....                                       | 72 |
| - Dogs and Other Pets .....                                    | 72 |
| - Linens, Blankets, Pillows and Towels .....                   | 72 |
| - Smoking .....  | 73 |
| - Spiritual Services (Sunday) .....                            | 73 |
| - Trash .....  | 74 |
| - Water (Drinking) .....                                       | 74 |

|  |           |
|--|-----------|
| - Wood Stove .....                                 | 74        |
| <b>Restaurants</b>                                 |           |
| - Marion .....                                     | 75        |
| - Falmouth .....                                   | 76        |
| - Leota .....                                      | 76        |
| - McBain .....                                     | 76        |
| - Temple .....                                     | 77        |
| <b>Shopping</b>                                    |           |
| - Shopping in Marion.....                          | 79        |
| - Shopping in Vogel Center .....                   | 80        |
| - Shopping in Falmouth .....                       | 80        |
| <b>Now Renting - Clam River Hideaway LLC .....</b> | <b>81</b> |

## **Assistance**

**Phone Service:** The Clam River Haven has a land line phone available to renters for calls within the USA. Cell coverage is very sporadic, so we suggest you use the cottage phone for a clear signal. The cottage phone is operated through satellite internet. Note: There is a fairly long delay between dialing the call and when the call connects to the other party.

***Clam River Haven Landline (231) 825-0144***

### **Questions/Concerns/Compliments:**

Linda Helfmann (586) 764-9188 / Bruce Gage (586) 295-3616

**Fire / Police / Ambulance Emergencies:** Call 9-1-1

**First Aid:** Both bathrooms have some first aid items and medication. The main bathroom also has a tackle box in the vanity that contains more first aid items such as gauze, ace bandages, tape, large bandages, etc. Please replace the items you use or at minimum, let us know they are used so they can be replaced.

### **Hospital (nearest):**

Munson Healthcare Cadillac Hospital (see page 52 for directions)  
400 Hobart Street  
Cadillac, MI 49601  
(231) 876-7200



**Medical - Urgent care:**

Cadillac After-Hours Clinic

Open: Mon-Fri 10 a.m. to 8 p.m. / Sat-Sun 10 a.m. to 6 p.m.

440 Cobb St

Cadillac, MI 49601

(231) 775-8814

Mid-Michigan Health Park

Open: Mon-Fri 9 a.m. to 5 p.m.

9249 W Lake City Rd

Houghton Lake, MI 48629

**Medical - Pharmacy:**

Walgreens Pharmacy - Cadillac

Pharmacy Hours: Mon-Fri 8 a.m. to 10 p.m. / Sat 9 a.m. to 6 p.m. /  
Sun 10 a.m. to 6 p.m.

1220 N Mitchell St

Cadillac, MI 49601

(231) 775-9166

Walgreens Pharmacy - Houghton Lake

Pharmacy Hours: Mon-Fri 9 a.m. to 9 p.m. / Sat-Sun 10 a.m. to 6 p.m.

729 W Houghton Lake Dr

Prudenville, MI 48651

(989) 366-5324

**Poison Control (open 24/7): (800) 222-1222**

**Police (non-emergencies):**

Clare County Sheriff Department

255 W Main St

P.O. Box 407

Harrison, MI 48625

Phone: (989) 539-7166



**Tornado or Severe Thunderstorm Warning:** Winterfield Township will engage their sirens in the unlikely event that a tornado or severe thunderstorm warning is present. The safest places to take cover would be either the garage with the door closed or the small twin bedroom with the door closed.

## Check in / Check Out

**Check in / Check Out:** Check in is at 3:00 p.m. and check out is at 11:00 a.m., but can usually be negotiated earlier or later if needed.

**Closing the Clam River Haven:** We hope you have an enjoyable stay at the Clam River Haven. We thank you very much for choosing us!

Before leaving, please complete the following tasks:

- 1) Please put away all outdoor items that were brought out and used, i.e., kayaks, equipment, toys, anti-gravity chairs, etc.
- 2) Close and lock garage door.
- 3) Summertime - turn wall thermostat HVAC to off / cold weather - turn thermostat down to 55 degrees.
- 4) Check the fridge and cupboards for your food and beverages to take home.
- 5) Trash can be left in the cottage and excess refuse left in the garage with the garage closed. Never leave trash outdoors.
- 6) Leave the beds messy so we know they were used.
- 7) Dirty towels and linens can go in the Laundry Room hampers.
- 8) Leave a note if you broke anything, if something is missing, is in need of repair, or just to say "hi." If you have a suggestion for improvements, we would very much like this information, also.
- 9) One last check through to make sure you have all of your belongings and you're good to go.
- 10) Close and lock all windows, doors and blinds and put the theft-deterrent stick in the doorwall.
- 11) Arm the security alarm.

## Activities - Indoors

**Activities to Do:** Board games, poker chips and puzzles are under the television. Playing cards and dice are in the kitchen cupboard. More fun than playing for money or bragging rights, play that the loser does the dishes. DVD movies are on the movie shelf and the Dish Network has some movies pre-recorded. Coloring books and crayons are in the Laundry Room.



**Bird and Tree Squirrel Watching:** There are multiple bird feeders. A book on identifying Michigan birds and binoculars are provided. There are at least six kinds of Woodpeckers, Cardinals, Hummingbirds, Blue Jays, Robins, Finches and countless others to watch.



Keep an eye out for the pair of Bald Eagles sitting in a tree (photo on left) and look for Woody (photo on right).

Tree squirrels are entertaining to watch jumping from tree to tree to the bird feeders. Two red squirrels live in the hole in the tree next to the bird feeder between the veranda and the river.

Chip and Dale can be seen darting in and out of the woodpile all day.

**Television and Video Games:** To watch television, click the two red buttons on the Dish remote. A few pre-recorded movies can be found on Dish Network by clicking DVR on the remote. Video on Demand (VOD) is not available.



Page 48 has a Dish channel guide.

To turn the television on/off, press both red buttons on the Dish remote.

A selection of DVDs are located on the shelf near the doorwall. Use the other remote to change the input to Blu-ray to watch these movies. DO NOT TOUCH THE HDMI CABLE OR ANY OTHER CABLES ON THE BACK OF THE TELEVISION.

Video games: We recommend you bring your own television to use if you want to play video games. There is a power strip under the radio. The internet cannot be used for video games or downloading music. DO NOT TOUCH THE MODEM, THE ROUTER, PLUGS OR ANY CORDS BEHIND THE TELEVISION. There will be a minimum \$250 fine for media or security equipment that has been tampered with or unplugged.

**Bose Stereo:** Do not leave the stereo or remote outdoors at night or in inclement weather. Quiet time is at 10 p.m. Page 47 has the station guide.

**Card Games:** Playing cards and dice are in the kitchen cupboard closest to the hallway. Card games in the cupboard include Uno, Skyjo, Phase 10, L-R-C and regular decks of cards. Included in this booklet are fun card games you may want to learn before you get to the Clam River Haven.

## Crazy Wild Rummy

**Number of Players:** 3 to 8 players

**Materials:** One poker deck with two jokers (3-4 players); two poker decks with four jokers for 5-6 players; and three poker decks with six jokers for 7-8 players, plus a note pad to keep score.



**Overview:** Crazy Wild Rummy is a rummy style card game. The goal is to score the least amount of points by the end of the game. Players can do this by going out or keeping their hand points low at the end of rounds. The game is played over seven rounds. Plan two hours to play all seven rounds.

**Scoring:** Joker (20 points), ace (used both high and low - 15 points), king, queen, jack and 10 (10 points each), 9, 8, 7, 6, 5, 4, 3 and 2 (5 points each).

**Sets and Runs:** There are two types of melds: sets and runs.

- **Sets** contain at least three cards of the same rank, but different suits. Example: three 3s, three kings, etc. - suits don't matter.
- **Runs** consist of four or more cards of the same suit in consecutive order. Example: jack, queen, king and ace of hearts. Aces are both high and low, however, it ends at the ace, so queen, king, ace, deuce is not allowed.
- **Jokers** are wild and can be used for either sets or runs.

**Rounds:** There are seven rounds per game.

## Round 1: Two sets (3 or more)

- Dealer deals nine (9) cards to each player. Remaining cards are placed in the center of the table and the top card is turned over to start a face up pile. If the card is a joker, the player next gets to pick it up. Player left of the dealer looks at the card turned over and decides if this card would fit in their hand. If yes, player picks it up and discards another card. If not, other players can then decide if they want to "buy" the card for their hand. Buying a card is the discarded card plus the top card on the face down pile (thus two cards). Each player can buy a maximum three (3) times per round.
- Since Round 1 starts with nine cards, three buys would equal a total of 15 cards maximum in the player's hand. Buys go in order left of the player first, then around the table clockwise until all the way to the dealer. Example: If it is Player 1's turn and he/she doesn't want the card, Player 2 can decide, then player 3, etc. If both player 2 and 3 want to buy the card, player 2 is next in line and gets the buy.
- After the buy is done (if there even is a buy), Player 1 draws a card, then discards. Before discarding, if a player obtains two sets of 3 cards or more, then player lays down the two sets of 3 cards or more and then can play on the other players who have already laid down. **Example:** If Player 5 has two sets of three (4's and jacks), he/she would lay them on the table face up in front of them and then can play their 10 and 7 on player 3's cards in front of them. Player 5 then discards to end their turn.

- Jokers can be replaced and used to help the player get rid of their cards. When all cards are gone from one player's hand, the round is over. A discard must happen in this round to go out. Points are counted for all remaining cards in other player's hands and recorded on the note paper.

### **Round 2: One Run (4 or more) and One Set (3 or more)**

Dealer deals 10 cards to each player. Same rules as Round 2, except maximum cards held are 16 and the lay down is one run (4 or more) and three sets (3 or more); If there are no more cards to draw from, the stockpile is shuffled and play resumes.

### **Round 3: Two Runs (4 or more)**

Dealer deals 11 cards to each player for the rest of the rounds. Same rules as previous rounds, except maximum cards held are 17 and the lay down is two runs (4 or more).

**Round 4: Three Sets (3 or more)** - Same rules as previous rounds.

**Round 5: Two Sets (3 or more) and One Run (4 or more)** - Same rules as previous rounds.

**Round 6: Two Runs (4 or more) and One Set (3 or more)** - Same rules as previous rounds.

**Round 7: Three Runs (4 or more) with no Discard** - Same rules as previous rounds, except the final discard is not allowed. Player must lay down all cards at once (nothing on the table is shown). Winner will place all their cards on the table at once (without discarding) and all the other players will have to count their cards for score. Player after Round 7 with the lowest score is declared the winner!



## Kings Corners (Solitaire)

2-4 players

### THE PACK

Kings Corners is played with a 52 card deck without the jokers.

### RANK OF CARDS

K-Q-J-10-9-8-7-6-5-4-3-2-A (ace low).

### OBJECT OF THE GAME

Players try to get rid of their cards by playing them in a solitaire-like layout of eight piles, built of alternate red and black cards in descending order.



### THE DEAL

Deal seven cards to each player. Place the remaining cards in the middle of the table as a stockpile. Then turn the four top cards over, placing one on each of the four sides of the deck — to the north, south, east, and west. These will be the foundation piles. The cards on the table should make the shape of a cross

### THE PLAY

The player to the left of the dealer begins by drawing one card from the center stockpile. The player may make as many valid plays as are possible during their turn to get rid of as many cards as possible from their hand. Once there are no more valid moves, it's the next player's turn.

Each player begins their turn by drawing a card from the center stockpile and making as many valid moves as they can.

### VALID MOVES:

Play a card (or sequence of cards) on a foundation pile in the cross. To play cards on a foundation pile, the card played must be immediately below the foundation card in rank and of the opposite color (red or black). For example, if a 9♥ is on the foundation pile, then the next card face played must be 8♣ or 8♠. A sequence of cards may also be played, but all the cards in the sequence must obey the lower rank and opposite color rules. Aces are always the lowest cards.

Play a “King in the corner.” Kings are the only cards that can be played in the corner spaces created by the cross. Once a King is played, players may then lay off cards on that pile like any other foundation pile.

Move an entire foundation pile onto another pile, if the bottom card of that recipient pile and the top card of the moving pile creates a valid sequence. This is often possible when the cards are first dealt.

Play any card or sequence of cards on a vacated foundation pile.

### **HOW TO KEEP SCORE**

The first player to lay off all of their cards wins.

## Poker Dice

2-8 players

You will need:

- Poker deck – 7s, Kings and Aces removed
- 2 dice
- Poker chips (Suggested amount: 20 per person)
- Suggested Bet: \$5 per person (or whatever you want the bet to be)

Playing the game:

- 1) Everyone antes 4 chips.
- 2) Dealer deals out all cards face up (if the deal isn't even, deal until all the cards are gone and the last person or persons get one less card). The deal rotates each round, so it evens out.
- 3) Each player decides their best poker hand is with the cards they have. Whoever has the best hand wins half the pot.
- 4) That same person then rolls the dice. If the total of the dice equals the amount of one of their cards, the player removes the card from in front of him and turns it over. If both dice have the same number, i.e., both are 2s, if the player has 2 number two cards in front of him, he can remove those instead of the 4.
- 5) If the player does not have 2 twos or a 4, then it goes to the next player and then the next until either 2 twos or a 4 is removed.
- 6) Whomever removed the card(s) then rolls the dice next and the play continues.
- 7) If a number is rolled and all the cards with that number are already removed, then the turn goes to the next person.
- 8) If any player rolls a seven, they must pay the pot one chip and lose their turn.**
- 9) The first player to have all of their cards removed is the winner of that pot.
- 10) Rotate to the next dealer and repeat.
- 11) The game is over when all the chips (or an overwhelming amount of chips) are in front of one person, who wins the money.

- Jack = 11 (Yo, short for Yoleven)
- Queen = 12 (Boxcars)
- 7 = Pay the Pot
- 2 dice with the same number = a hard number, i.e., a 4 and a 4 would be called a Hard 8

### **Pick Up Sticks (Located in the Cabinet Under the TV)**

- 1) The first player vertically holds all Pick Up Sticks touch in one hand making sure that one end of the sticks remains in with the playing area, the player quickly releases his/her hand and lets the sticks scatter.
- 2) The player proceeds to pick up the stick. The only stick that is allowed to move is the one the player is trying to pick up. If any other stick moves, that player's turn is over, and play passes to the next player on the left.
- 3) The next player continues to pick up a stick.
- 4) If a player is successful in picking up the Black stick (called the Master Stick), that player is permitted to use the Master Stick for removing other sticks. (For example, to separate two sticks that are lying close together, or to flick off one stick that is resting on another stick). No other stick may be used in this way.
- 5) Players are to agree in advance on how many points are required to win the game. (i.e.: 100 or 250 points).
- 6) When all the sticks are picked up, the score is tallied. The first player to score the required points to win is declared the winner.
- 7) Variation: Roll the colored die to determine what color stick the player has to pick up.

#### **Number of Sticks and Point Value:**

- 1 Black – 25 points
- 7 Red – 10 points
- 7 Blue – 5 points
- 8 Green – 2 points
- 7 Yellow – 1 point

## Activities - Outdoors

**Bonfires:** Enjoy the bonfire pit. Wood is provided near the bonfire for your use. **DO NOT BURN THE POKING STICK!** The poking stick is there just to poke the fire. If someone in your group burns the poking stick, it is your responsibility to go into the woods and find a suitable replacement! Matches are located in the kitchen cupboard top shelf nearest the bathroom. Fire starters and paper are stored in the wooden cabinet between the brown Lazyboy chairs. More wood is available by contacting the host for a small charge. Wood can also be purchased on US-61 (going towards Harrison). Do not leave fires unattended. The chairs can be wiped down with an old towel. There are long sticks with wood handles on top of the kitchen cupboards over the sink for roasting marshmallows or hot dogs. Hobo pie irons are in the garage.

**Corn Hole, Darts, Horseshoes, Volleyball, Football, Frisbee and ring toss:** Corn Hole boards, corn bags and instructions are in the garage. Horseshoes are also in the garage and the pits are set up in the north section of the yard. Darts (sorry, only the non-pointy kind) and the rings, a football and a frisbee are also in the garage for your use, as well as a volleyball set. The ring toss game is attached to the Black Walnut tree near the bonfire. Please return all games to the garage when finished. Don't leave them out overnight or they could blow in the river and the corn bags get wet and moldy and then have to be replaced.

## Catching and Eating Crayfish:

Crayfish, also known as "crawfish" and "crawdads," resemble miniature lobsters, from their long claws to their fanned tails. Unlike lobster, crayfish are freshwater shellfish and generally grow to be about 4 inches long.



Crayfish are crustaceans; they swim backwards, but walk forward. They reach maturity in about 4 years and can live up to 30 years. Some of their diet consists of small fish, insect larvae, and carrion. Did you know that they shed their skin and often eat it for the calcium that it contains so it can develop a strong new shell? A crayfish has four pair of walking legs and four pair of swimming legs.

Crayfish have a texture and flavor similar to shrimp. Crayfish can often be used in place of shrimp in most recipes, but they have a distinctive flavor that sets them apart from other seafood.

Crayfish are commonly boiled in the shell after a cleaning process called purging. Purging helps rid the crayfish of impurities in their intestinal tract, such as mud and grass, to make them more palatable. Purge crayfish right before boiling; if you do it any earlier, they will die. There are nets in the garage to catch the crayfish.

### Purging Process:

1. After netting the crayfish, place the live crayfish in a large mesh bag and place in an ice chest filled with fresh very cold water. Agitate the mesh bag to release the sand and other impurities, and return to new fresh cold water. Repeat often for 24 to 48 hours. To store them longer, briefly hose them down with water and place them in a container with ice. Live crayfish can be kept at 36°F to 46°F for a few days. Drain them as needed, so you aren't leaving them submerged in water. Be sure to remove the ice and let the crayfish return to room temperature before purging and cooking.
2. Take the live crayfish out of the sack and put them into a large plastic tub or cooler. Make sure your container has enough room to thoroughly clean them. Also make sure they won't be able to somehow crawl out.

3. Pour table salt over the crayfish in the tub, shaking liberally over them. The crayfish should go wild with discomfort when you do this. Some cooks believe that salting may help clean the crayfish better by compelling them to essentially vomit and purge any mud and waste in their digestive system. However, it also increases the risk of killing the crayfish during the purge.
4. Use a large instrument to stir them up and then salt them again. You want to try to salt the whole batch evenly.
5. Pour fresh water over the live crayfish until they are just submerged. You can use another bucket or just fill their tub up with a hose. When this happens, the crayfish spit out the grime in their system, minimizing fishy taste and odors and reducing the size of their gritty sand vein.
6. Stir gently with a large instrument for about 3 minutes. The moving water will help wash the mud off the crayfish's shells and gills.
7. Pour out the salt water, keeping your crayfish in their tub. Try to drain the salt water completely.
8. Refill the tub with new fresh water, and stir. Check for any dead crayfish that float to the top—remove them and throw them away immediately.
9. Rinse them one more time. After giving it a stir, the water should be much less grimy than in previous rinses. If you are satisfied with the cleanliness, you are done purging. Drain the water and proceed to boil your crayfish.



### **Cooking Crayfish:**

1. Fill a large cooking pot with water. Add seasoning to taste, or according to the packet instructions if you're using purchased seasoning. If you're using crab boil seasoning, use 2 to 4 tbsp. for 5 lbs. of crayfish, depending on how spicy you want them. Fresh lemons can also be added to the pot.
2. Bring the pot to a boil. Add the crayfish. When the water comes back up to boiling, boil the crayfish for five minutes, then turn off the heat.
3. Let the crayfish sit in the seasoned water for 15 to 30 minutes. The longer they soak, the spicier they'll be.





4. Drain and serve hot with lemon, hot sauce or melted butter, or add shelled crayfish to any recipe that calls for shrimp, crab or lobster meat.

### **How to Peel and Eat Crayfish:**

#### **Version 1:**

When eating crayfish, there's no need to remove the peel from the tail. While you are laboring over the crust of the crustacean, your Cajun friends will eat five times as many crawfish as you do.

Here's the easy way to do it. First, break off the head and discard it. (There are those, however, who suck the heads and pick the delicious meat out of the larger claws.) After you break the head off, place your thumb on the ejection button near the tail of the crawfish on the underside and mash firmly to break the meat loose.

With the shell still partially intact, bring the tail meat to your mouth and sink your teeth into the exposed meat. Chomp down on it, and it will pop into your mouth as you leave the tail behind.

#### **Version 2:**

1. Remove the head from the tail. Pinch the head between two fingers with one hand, and hold the tail with your other hand. Give the head a twist until it comes off. If the head doesn't twist off easily, it may not be fully cooked.
2. Suck the head. Place the open part of the head between your lips and suck out the juices. This part of the crawfish is considered a delicacy in the Southern United States. Skip this step if you are squeamish.
3. Crack the tail's shell. Pinch the shell that covers with the tail with your fingers to crack it all over. Remove the shell and discard it.
4. Devein the crawfish. Hold the tail with one hand and peel back the outer layer of skin from the top of the crawfish with your other hand. The digestive tract will be pulled off with the tail. Discard it.
5. Eat the tail meat. The tail meat is the most substantial part of the crawfish, and can be eaten right away or used to make other crawfish dishes. Crawfish étouffée, a traditional Cajun dish, and crawfish pizza are popular in the South.
6. Suck the claws. Most crawfish have small claws that can be cracked open and sucked for their meat and juices.

**Driveway Chalk and Bubbles:** Chalk and bubbles are stored on the shelf near the furnace.

**Firearms:** Discharging or other weapons are strictly prohibited on the Clam River Haven property. See Hunting Opportunities that shows State Land where firearms might be permitted.

**Fireworks:** Do not set off fireworks. Fireworks are a fire hazard, create lots of debris and scare nature. Sparklers are permitted as long as the debris is disposed of properly and they are used responsibly.

## **Fishing the Clam River:**

*Opening weekend of Michigan Trout Season is the last weekend in April.*

*Michigan is blessed with an abundance of cold, quality trout waters offering 38,000 plus miles of rivers and streams, including over 12,500 miles of classified trout streams. Remarkably, 868 miles are considered premier top-quality streams, which Michigan classifies as its Blue Ribbon Trout Streams (BRTS).*



*A Blue Ribbon Trout Stream must meet certain standards or criteria. It must be one of Michigan's best trout streams, be able to support excellent stocks of wild resident trout, have the physical characteristics to permit fly casting but be shallow enough to wade, produce diverse insect life and good fly hatches, have earned a reputation for providing a quality trout fishing experience, and have excellent water quality.*

*Management of Blue Ribbon Streams by the Michigan Department of Natural Resources is directed toward accommodating the needs of trout anglers, maintaining strong stocks of wild resident trout that best suit the character of each stream, maintaining and enhancing trout habitat and the natural stream environment, providing adequate public access and public frontage, and preparing appropriate informational materials on these special Blue Ribbon Trout Streams of Michigan.*

Nineteen miles of the Clam River, between Wexford County Line and Turnerville Road, is deemed a Blue Ribbon Trout Stream. Source:  
<http://trailstotrou.com/blueribbon.html>

*Fish for:*

- Brook Trout
- Rock Bass
- Northern Pike
- Brown Trout
- Rainbow Trout

**Access:** Private - Public

Fishing Not Permitted

**Fishing License:** Required

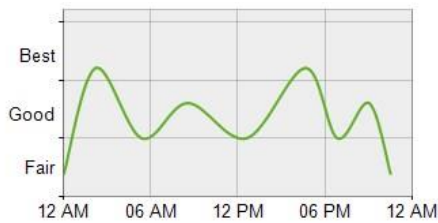
**Fishing Rules & Regulations:**

Michigan Fish & Wildlife

The Vogel Center Store sells fishing licenses.



Estimated Summer Fishing Times for Clam River:



**Best Fishing Times**

1:11AM to 3:11AM, and 3:40PM to 5:40PM

**Alternate Fishing Times**

7:33AM to 9:33AM, and 8:03PM to 10:03PM

**Frogs and Fireflies:** Butterfly/frog nets are in the garage for your use. A bucket is in the Laundry Room to put the frogs in. Please release all wildlife at the end of the day and return the nets to the garage. Fireflies can be put in a jar with small holes punched in the lid. Kids love to watch them light up when it is dark.

**Golf Cart (extra fee):** If the golf cart was pre-ordered, the key will be provided. To start the golf cart, insert the key and turn it to ON. If you need reverse, turn the lever from forward to reverse. The lever is located in the center of the golf cart behind the driver's legs. Beeping will occur when you are in reverse mode. On a fresh start, hold the choke button (located behind the driver's legs), then press the accelerator pedal with your right foot at the same time. The vehicle soon warms up and the choke is no longer necessary. Always obey traffic laws. Park golf cart in the garage each night. Be sure to turn the key to off when not using for a while so the battery does not drain. The radio accepts CDs and MP3, as well as AM/FM for your listening pleasure. The golf cart will come with a full fuel tank, so replacing the fuel should not be necessary. Contact Linda Helfmann if interested in renting the golf cart. A Golf Cart Damage Waiver Form **MUST** be completed and signed prior to using and there is an extra charge for this.



## Hobo Pies and Outdoor Family Cooking:

Directions for Using Hobo Pie Irons  
(2 pie irons are located in the garage)

You will need:

- 1 or 2 Pie Iron(s)
- Butter Knife
- Tablespoon
- Soft Spread Margarine
- Squishy Bread
- Filling (see below)
- Pot Holders
- Cookie Sheet or Large Cutting Board
- Lots of Newspapers or Cardboard
- Paper Plates



1. Wash inside of hobo pie maker with soap and water. Dry well with paper towel.
2. Prepare the work surface. Using lots of newspaper or cardboard, cover the work surface so the pie makers don't burn the work surface. Use a large cutting board or cookie sheet as your food work surface to prepare the food.
3. Using the food work surface, spread margarine on two slices of squishy bread.
4. Lay one slice of bread, margarine side down, into one side of the pie maker.
5. Spoon approximately 3 tablespoons of filling onto the bread and cover with the other slice of bread margarine side up. (Try not to overfill the filling.)

6. Hook the remaining half of the pie maker end together and close and clip the unit. (Make sure the clip is near the wooden handles so it doesn't get super hot in the fire.)
7. Using a butter knife, scrape the excess bread off the outside of the pie maker.
8. Insert the pie maker directly in the hot coals of the campfire. Cook, turning occasionally, until the pie is hot and golden brown, about 4 minutes. Check often using pot holders to open the clip.
9. When both sides are golden brown, place the pie maker on the thick layer of cardboard/newspapers, unclip, open and separate the pie maker, flipping the completed hobo pie onto a paper plate. Let cool. Slice in half and enjoy.
10. Note: The second hobo pie will cook much faster because the pie maker is already very hot. Please take extreme caution not to burn yourself.

When finished, wash the pie makers with soap and water. Air dry or dry well using a paper towel. Generously spray cooking spray on all sides of cast iron portion of the pie maker. Assemble each pie maker, placing a clean, dry paper towel between the pie maker, then clip. Tightly wrap the pie maker (cast iron portion) in a plastic grocery bag to keep out excess moisture and keep clean.

#### Suggestions of Hobo Pies:

- Any canned pie filling
- Grilled Cheese Hobo using any type of sliced cheese
- Ham and Cheese Hobo or use other sliced meats
- Peanut Butter and Jelly
- Peanut Butter and Banana



- Breakfast Hobo - Raw egg with pre-cooked bacon or slice of ham, salsa (optional)
- Pizza Hobo, using Mozzarella cheese, pepperoni, and any other desired toppings)
- Tomato, Fresh Basil, Pesto & Fresh Mozzarella Cheese
- Second Hand Cheese Steak Hobo - Chop up or slice thin leftover grilled hamburger, hotdog, chicken, pork or steak and place approximately 2 tablespoons on bread. Add a slice of cheese or small chunks, or grated parmesan. Add thinly sliced green peppers and onions. Top with a splash of Italian dressing and/or Tabasco and a sprinkle of garlic powder and/or oregano.



**Kayaks, Canoes and Inner Tubes:** There are seven kayaks, 2 canoes and several inner tubes available for use at the tenant and guest's personal liability. This equipment must be scheduled in advance as we are now renting another cottage nearby and sharing this equipment. Please coordinate with Linda when you would like to use the kayaks, canoes and/or inner tubes. Multiple times are okay.



By Michigan law, a life jacket or life preserver must accompany every kayaker or canoer (hence a boat). Use this equipment safely and return everything to the garage where it was found and in good condition. Repairs or replacement of any equipment not returned properly or found to be damaged will be charged to you at full retail replacement value. The seven kayaks should already be in the garage loaded on a trailer and there are bungee cords and rope to tie them securely to the trailer. Five of the kayaks are the sit in style and one is the sit on top for those who don't like that "closed in" feeling. The trailer hitch requires a 2" ball. The canoes can also be loaded on the trailer. They can also be loaded in the back of a pickup truck. Same goes for the inner tubes. Life preservers and paddles are hanging on the wall.

If you do not have a vehicle with a trailer hitch or just want someone to drop equipment up the river, we can arrange to have someone drive the kayak trailer up river, then return the trailer back to the garage for a \$45 fee. Tenant and group will follow with their vehicle(s) and park at the drop off place. When the kayak ride is finished, tenant drives an

additional vehicle to retrieve the first vehicle(s). Depending on how many people are going, it is possible that some or all of the people may also go with the equipment in the same vehicle. This must all be arranged ahead of time, preferably a minimum of 24 hours in advance. Normally, people just park at the edge of the road where they want to drop in and then ask the homeowner (if they are up there) if they mind if you cross their property to drop in the river and leave your vehicle next to the road. As long as you are respectful, nobody will mind and they usually find it amusing to watch everyone board their personal watercraft to depart for their journey. See Directions section for more information and for some suggested places along the river to drop the kayaks, canoe(s) or inner tubes in the river.

## Morel Mushroom Hunting:

Morel mushrooms are among the most cherished of all wild mushrooms, with their richly distinctive flavor. They're available fresh for just a few weeks in late April/early May or dried throughout the year. They can be found in wooded areas around the Clam River Haven, mostly under Oak trees. Be sure to bring a mesh bag to collect the mushrooms so the spores inside the mushrooms have a chance to drop back to the ground to repopulate for next year.



### Preparing Fresh Morels

- Like many other fine mushrooms, morels grow on the forest floor and usually contain dirt, leaf mold and insects, whether you forage them or purchase fresh ones. Aficionados differ sharply in how to clean them, with some advising a lengthy soak in salted water. Others insist that even a brief rinse impairs their flavor. Most cooks take a middle ground, cleaning away visible soil with a soft brush or damp cloth, and then rinsing the mushrooms briefly under cold water and blotting them dry. Slice the cleaned mushrooms lengthwise, or halve or quarter them lengthwise, to remove any embedded soil, insects or larvae.



## Cooking Fresh Morels

- Most cooks and chefs begin by cooking morels very simply, usually sautéing them in a small quantity of butter until they release and re-absorb their natural moisture. The morels' earthy, complex flavor has a great affinity for butter, as well as shallots, ramps -- a sort of wild spring leek -- and garlic. Simple sautéed morels can be enjoyed on their own over toast or scrambled eggs; or used as a garnish and flavor accent in pasta dishes, risottos, pilafs and quiches. Morels also make a superlative companion to steaks and game dishes, alone or in a rich wine-based sauce.

## A Few Cautions

- Many mushrooms can be enjoyed raw as well as cooked, but morels aren't among them. They contain a mildly toxic compound that evaporates after even the gentlest of heating, leaving the mushrooms perfectly safe. It's also important to note that there are two families of false morels, the *Verpas* and the *Gyromitras*, which are significantly more dangerous.
- If you decide to hunt for Morels, please refer to the mushroom book located on the living room table for more details before eating any wild mushroom. The Clam River Haven LLC is not responsible for anyone eating wild mushrooms or any other food.



**Nature Viewing:** Nature can be found wherever you look. A family of otters, bald eagles, blue herons, foxes, turkeys, frogs, turtles, chipmunks, tree squirrels and deer are often seen wandering the property. We even have a resident five-lined skink who suns on the deck near the river, one of the only lizards found in Michigan. Not to worry, skinks are harmless and only eat crickets, grasshoppers, spiders, centipedes, and beetle larvae. See how many different types of wildlife can be spotted during your visit. Can you spot the two deer in this photo?



Local farmer's dogs can often be seen making their rounds to the cottages and houses in the neighborhood looking for a handout or just a pat on the head. Ignore them or tell them to go away if you don't want them around and they will move on to his next location to visit. There are dog biscuits for them in the Lobby if you want to give them a treat. Do not let any animal in the building.



**River Splashing:** The Clam River depth varies depending on the rainfall and time of year. The spring typically is deeper and faster than in August, when the depth is about knee high for adults in front of the cottage. We recommend wearing water shoes in the river due to sharp rocks and clam shells. There are two milk crates of old water shoes of various sizes for you to use if you want. Just return them when finished. Small children should wear a life preserver when near or in the water due to the river current.

**Star Gazing:** You are in the country, which is perfect for star gazing.

The Northern Lights are a spectacular phenomenon that are hard to predict, and hard to forget! Their occurrence is tied to the activity of the Sun, and the solar wind caused by the eruption of spots on the Sun's surface. This solar wind puts a pressure on Earth's magnetic field, which is not uniform, and when we come 'round to the times of Equinox every spring and fall, it seems the most vulnerable part of our magnetic field is exposed to the pressure of solar wind, and an increase in aurora is the result!

Note that auroras are usually most active after midnight, and you'll do best if you start out by looking north.

Below are some of the more popular star constellations. See how many you can identify in the sky.





**Sunbathing:** There are four anti-gravity chairs for lounging. Two are in the veranda and two are in the garage. Please return the chairs to their proper location before nightfall.

## **Activities a Short Drive Away:**

### **Airports**

- *Detroit Metropolitan Airport (DTW) - 203 miles*
- *Saginaw Airport (MBS) - 79 miles*
- *Traverse City Airport (TVC) – 67 miles*

### **Canoe/Kayak Rentals**

- *Duggan’s Canoe Rental (989) 539-7149 – 16 miles*

### **Casino**

- *Soaring Eagle Casino Resort and Shows (888) 732-4537 – 54 miles*

**Dunes:** *Sleeping Bear Sand Dunes, Empire – 90 miles*

### **Golf Courses (18 golf courses less than 50 miles away):**

- *Birch Valley Golf Course, Sears (231) 734-9112 – 24 miles*
- *Caberfae “The Peaks” Golf Resort, Cadillac (231) 862-3000 – 41 miles*
- *Cadillac Country Club, Cadillac (231) 775-9442 – 26 miles*
- *Devil’s Knob Golf Course, Harrison (989) 539-5662 – 28 miles*
- *Eagle Glen Golf Course, Farwell (989) 588-4424 – 31 miles*
- *Eldorado Golf Course, Cadillac (231) 779-9977 – 23 miles*
- *Firefly Golf, Clare (989) 386-3510 – 33 miles*
- *McGuire’s Evergreen Resort, Cadillac (231) 775-9949 – 24 miles*
- *Missaukee Golf Club, Lake City (231) 839-2901 – 17 miles*
- *Pine View Highlands Golf Course, Houghton Lake (989) 366-7726 – 31 miles*
- *The Quest Golf Club, Houghton Lake (989) 422-4516 – 28 miles*
- *Snow Snake Golf, Harrison (989) 539-6583 – 28 miles*
- *Spring Valley Golf Course, Hershey (231) 832-5041 – 40 miles*
- *Tamaracks Golf Course, Harrison (989) 539-5441 – 29 miles*
- *Wedgewood Golf Course, Cadillac (231) 779-4653 – 29 miles*
- *White Deer Country Club, Prudenville (989) 366-5812 – 35 miles*
- *Wild Haven Disc Golf Resort, Manton (231) 668-7829 – 36 miles*

## Horseback Riding (Ewart, MI)

- Rockin' L Ranch (Riding and Lessons)  
(231) 429-7529 - 30 miles
- 2019 pricing - \$20/hour (incl. lesson)
- [RockinlRanch18@gmail.com](mailto:RockinlRanch18@gmail.com)
- <http://www.rockinlRanch18@wixsite.com/website>



"Beautiful scenery, 40 minute drive from CRH, and very reasonably priced. It was our first riding adventure and Courtney was very patient and helpful. We definitely recommend Rockin L Ranch for new riders."

T. Sowards, 2019

## Rockin L Ranch

ROCKIN L RANCH · SATURDAY, JULY 14, 2018 ·

Our goal is to make riding affordable so everyone is able to enjoy it! We have horses for every rider. It is our goal to connect people with horses. Horseback riding has many benefits to people of all ages. There is a deep connection that can be made with a horse that has many therapeutic benefits.

"No hour of life is wasted that is spent in the Saddle." Winston Churchill

Most of our horses are trained right here on the ranch, by owner and operator, Courtney. Courtney has years of experience training and has competed in multiple disciplines. Riders are placed on horses appropriate for their age and experience.

Visits to the ranch are welcomed free of charge. If you would like to come check the ranch out or get the kids out of the house, please call and schedule a visit. We only charge for riding time.

Visit us on Facebook @ <http://www.facebook.com/RockinLRanch18/>



## Hunting Opportunities (year round):

No matter where you are in Michigan, you can find public hunting land. The Clam River Haven is located in Clare County, but is close to both Osceola and Missaukee Counties. Also, there are private hunting land opportunities. If you are interested in hearing about private hunting opportunities, please contact Linda Helfmann at (586) 764-9188.

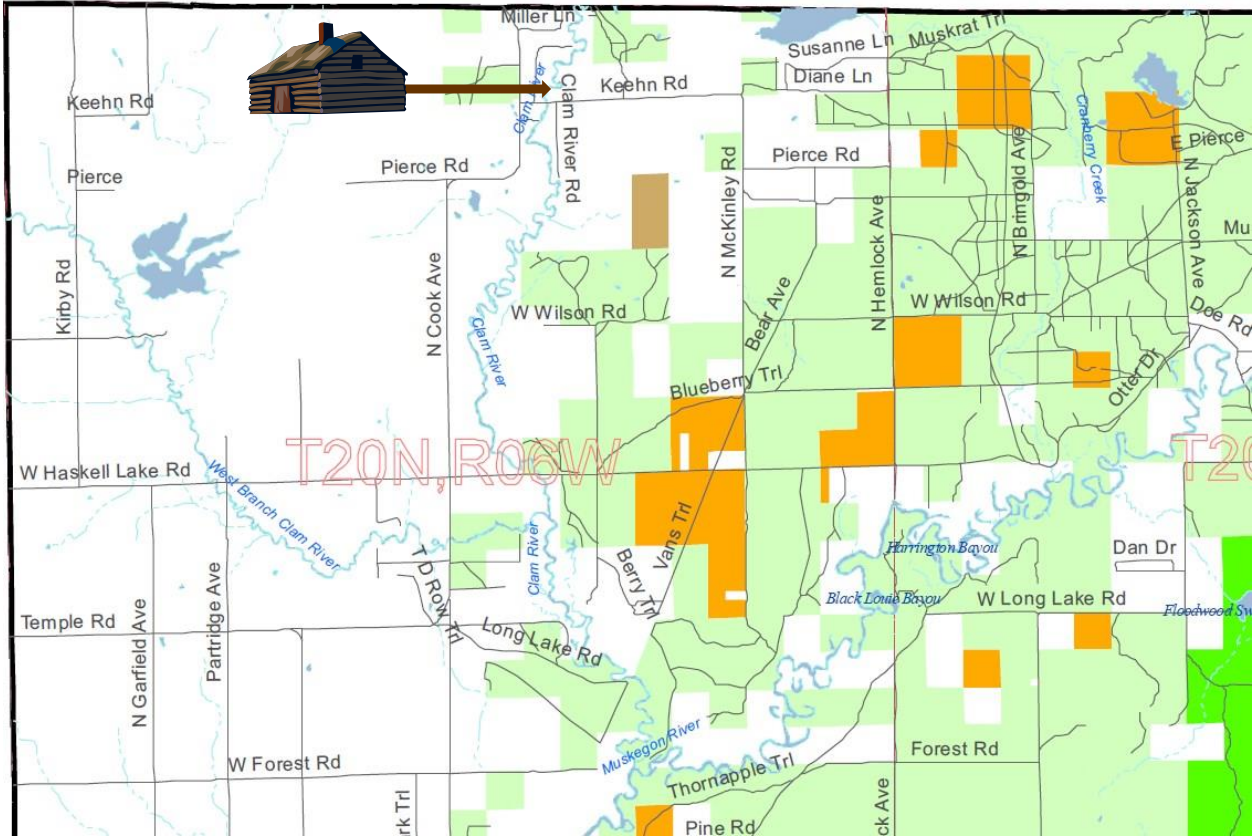
The Vogel Center Store and Temple Party Store sells hunting licenses.

Whatever you decide to do, do not shoot the deer walking on or near the Clam River Haven. They are there strictly for your viewing pleasure!



Ryder Galloway - 9 years old  
Youth Hunt - September 2019  
Shot with crossbow on Clare County state land

# Clare County:



## Open to Public Hunting

- State Forest Land
- State Wildlife/Game Areas
- HAP (Hunter Access Program) Boundary
- Commercial Forest Act Lands
- State Parks and Recreation Areas
- US Forest Service
- National Park Service
- US Fish & Wildlife Service
- HAP (Hunter Access Program)\*

Source: [http://www.midnr.com/FLW/LandsOpen-Hunting/Hunting\\_Land\\_clare\\_COUNTY.pdf](http://www.midnr.com/FLW/LandsOpen-Hunting/Hunting_Land_clare_COUNTY.pdf)



## Sightseeing Amish Shopping

**Pineview Discount and Grocery Store (Closed on Sunday) 9200 S  
Burkett Rd, McBain, MI 49657 (231) 825-2892**



The number one place to stop in McBain is Pineview Discount Groceries, also called the "Amish Store." It is run by an Amish family and has a variety of marked-down, discontinued items.

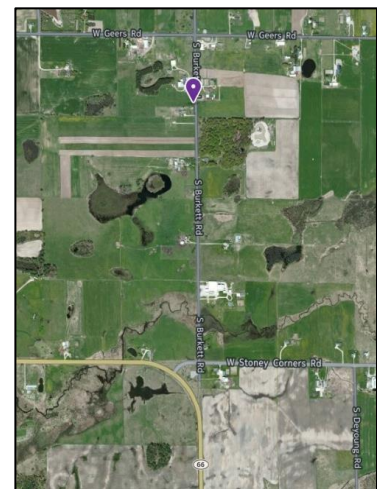
It's not the shopping that is fun in this store, it is the people watching. They have some Amish cheeses that are reasonably priced with a Swiss cheese that is high quality. There are many different hot sauces, salsas, and BBQ sauces for pennies on the dollar. Watch the expiration dates.

One little aisle has deals on candy. For this much fun and special treats, it's well worth the trip to stop through this country town. Besides, you get to see real Amish people and horse and buggies!

On your way to the store (on E Strief road just before the big turn to the left, you might see an Alpaca farm (5 Alpacas of different colors). Alpaca farm is before turning on Stoney Corners and before Vogel Center.

### ▪ **Directions to the Amish Pineview Store:**

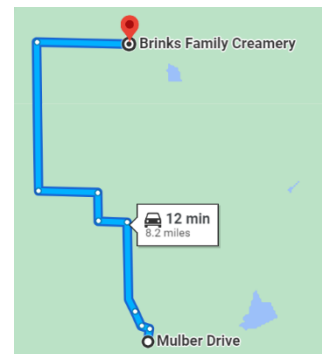
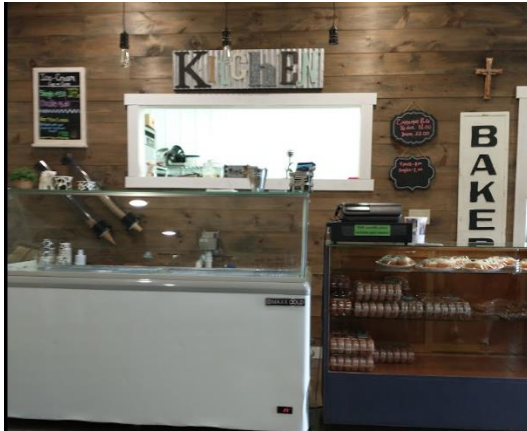
- Follow the directions to the Wayside Chapel (next page)
- Instead of turning left on S. Burkett Rd, turn right approx. 1 mile.
- Store is on your left.



## Sightseeing Brinks Family Creamery

3560 E Mulder Rd, McBain, MI 49657  
Closed Sundays & Mondays

Lactose friendly ice cream  
Sells cheeses, milk and baked goods  
Small petting farm



12 min (8.2 miles)  
via S 8 Mile Rd

- Head south on Mulber Dr toward Keehn Road
- Right on Keehn Road 0.2 mi
- Turn right on Strawberry Avenue, which turns into S Richards Rd, then into Streif Rd. which turns slightly right and becomes S 9 Mile Rd ~5.5 mi
- Turn left onto E Stoney Corner Rd 1.0 mi
- Turn right onto S 8 Mile Rd 2.5 mi
- Turn right onto E Mulder Rd 1.6 mi

Road

## Sightseeing Wayside Chapel (See the smallest chapel in Michigan)

On M-61 just outside of McBain from Marion there is a tiny white non-denominational chapel complete with bell. McBain is just south of Cadillac. It is pretty much in the middle of nowhere. Funny part is the parking lot is huge and the chapel is teeny tiny.



### ▪ Directions from the Clam River Haven to the Wayside Chapel, McBain, MI:

9.6 mi, 12 min driving

- Depart Mulder Dr toward Keehn Rd - 0.1 mi
- Turn right onto Keehn Rd - 502 ft
- Turn right onto Strawberry Ave 0.7 mi
- Road name changes to S Richards Rd 1.5 mi
- Road name changes to E Strief Rd 0.5 mi □ Road name changes to S 9 Mile Rd 0.5 mi
- Turn left onto E Stoney Corners Rd 3.0 mi
- Road name changes to W Stoney Corners Rd 3.0 mi
- Turn left onto S Burkett Rd 185 ft
- Arrive at S Burkett Rd near 10041 S Burkett Rd, McBain, MI 49657





## Sightseeing Deer and Other Animals

At dusk, the deer come out to feed; sometimes dozens can be seen in just one field. This photo was taken at 9 a.m. September 14<sup>th</sup> of a doe walking through the yard of the Clam River Haven.



Although deer and other animals are prevalent everywhere and can be spotted anywhere, below is a suggested round trip where deer are often spotted. Caution: The deer often cross and stop in front of you in the street; be careful not to hit any "deer in the headlights!"

On the way to Vogel Center, just before the big turn to the left is an Alpaca farm on the right.



Make a game to see who can spot the most types of animals. Look for the eagles, raccoons, skunks, foxes, blue herons, chipmunks,



woodpeckers, turkeys, the sand hill crane, and many more.

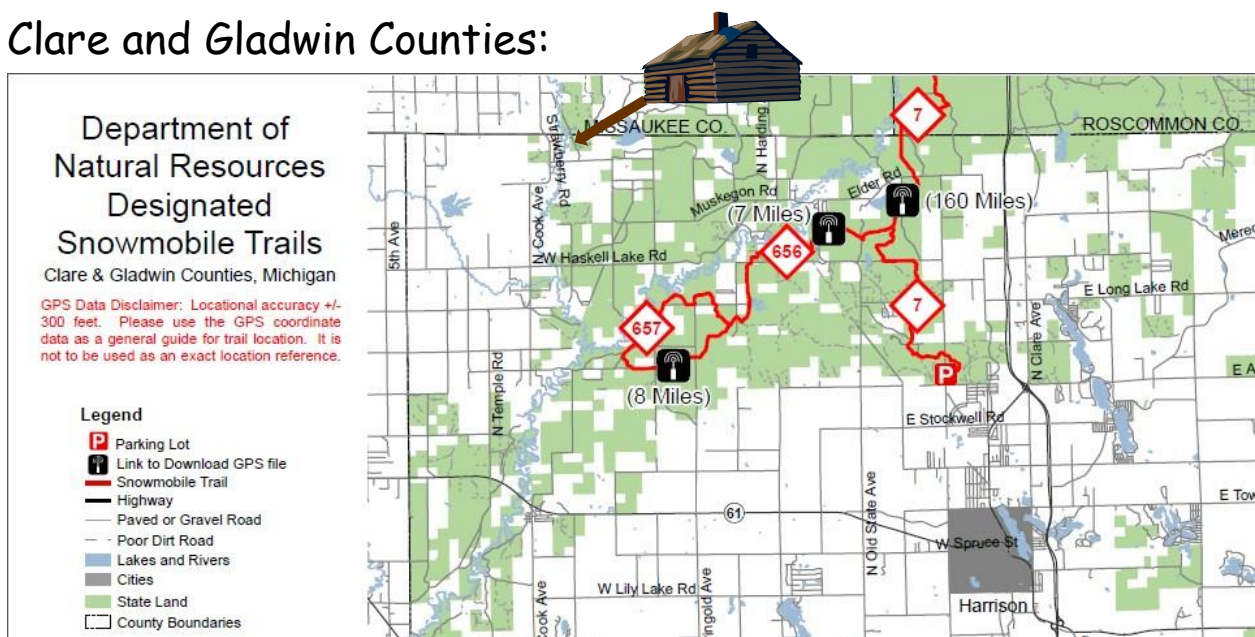
## Snowmobile and ORV Rentals:

- *Don's Rent and Ride ATV/ORV and Snowmobile Rental, Prudenville (989) 366-7664 – 33 miles*
- *Happy Trails Rentals. a 1-min walk from Trails End Pub, 10137 N Finley Lake Ave, Harrison, MI 48625, (989) 539-3690 – 9 miles*

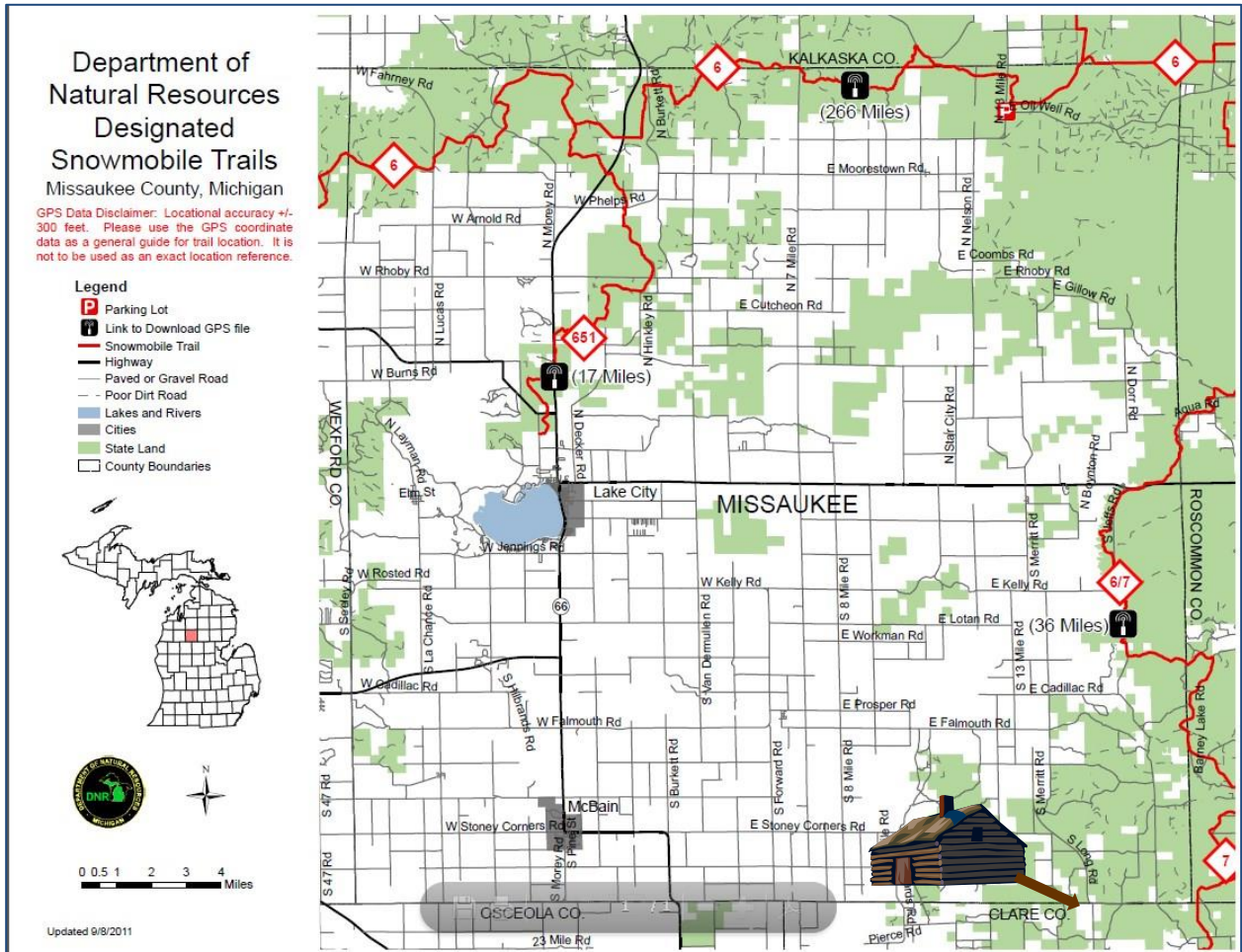
## Snowmobile and ORV Trails:

There are several designated snowmobile trails near the Clam River Haven. The Vogel Center Store sells ORV and snowmobile stickers. Snowmobiles can be rented in Harrison and Houghton Lake.

## Clare and Gladwin Counties:



# Missaukee County:





# Roscommon County (30-45 drive from Clam River Haven):

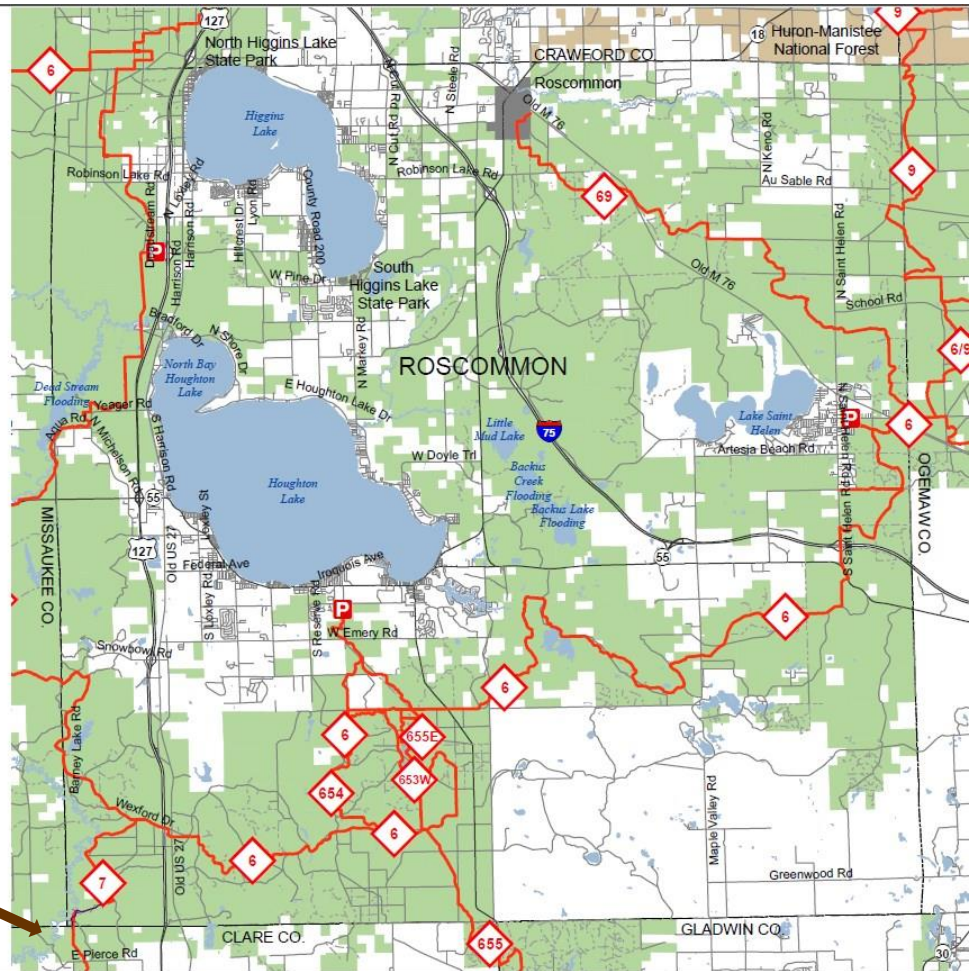
Department of  
Natural Resources  
Designated  
Snowmobile Trails  
Roscommon County, Michigan

- Legend**
- Parking Lot
  - Snowmobile Trail
  - Temporarily Closed Trail
  - Highway
  - Paved or Gravel Road
  - Poor Dirt Road
  - Lakes and Rivers
  - State Land
  - Federal Land
  - County Boundaries



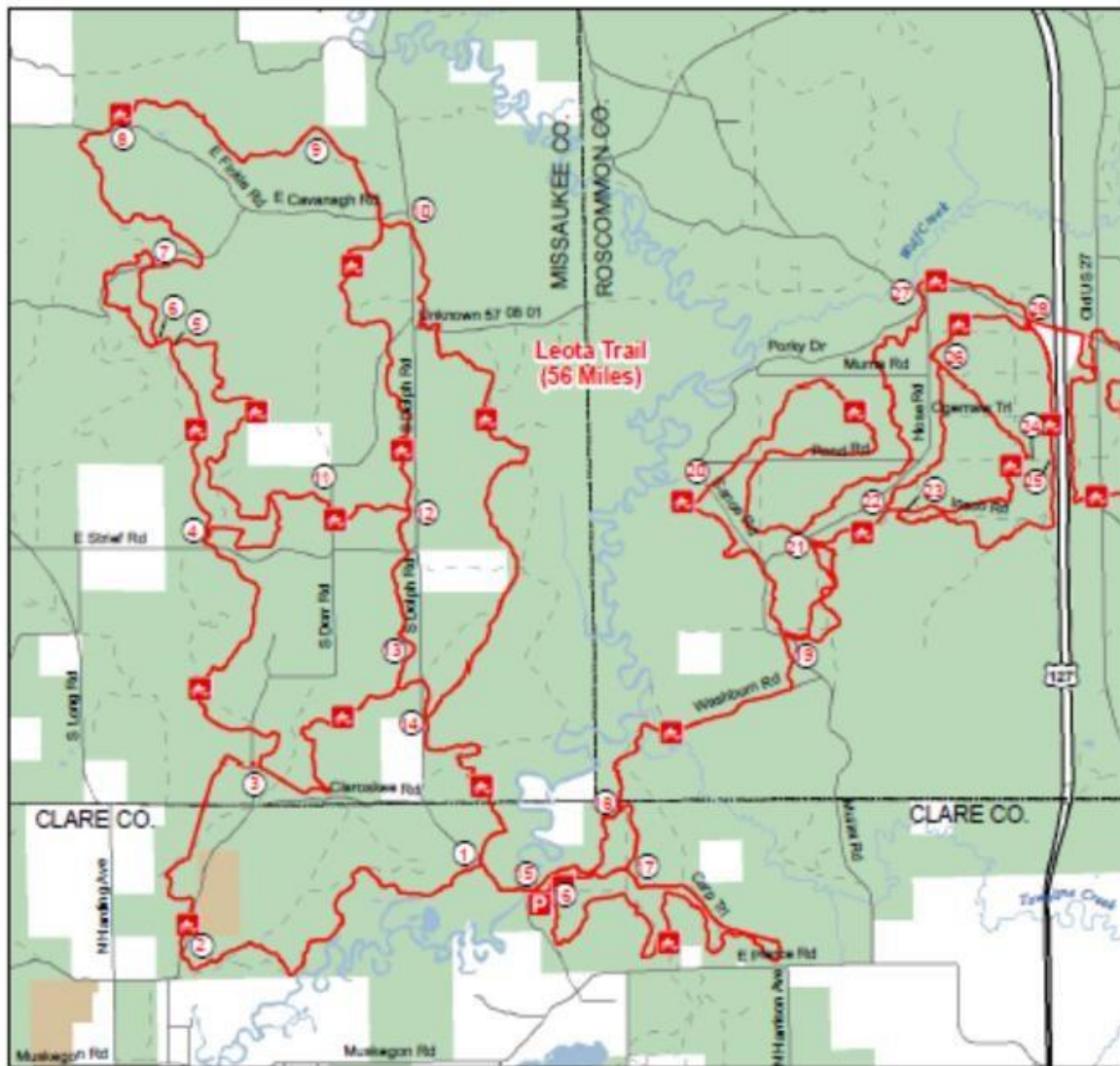
0 0.5 1

Updated 10/11/2010



# Leota Trail

Missaukee, Roscommon & Clare Counties, Michigan



ORV Trail – ORVs 50 inches in width or less including off-road motorcycles. ORV license and trail permit required.

- Intersection Number
- Parking Lots
- Highway
- Paved or Gravel Road
- Poor Dirt
- Lakes and Rivers
- Federal Land
- State Land
- County Boundary

**Advisory:** Trails and Routes have two-way traffic.

**Disclaimer:** Trails shown on this map are an approximate representation of the trail system at the time of publication and may not reflect current ground conditions. **STAY ON SIGNED TRAILS ONLY!**



Updated 3/4/2014



**Ski Resorts** (4 ski resorts less than 55 miles away):

- *Caberfae Ski, Cadillac (231) 862-3000 – 41 miles*
- *Hanson Hills Recreation Area, Grayling (989) 348-9266 – 53 miles*
- *Missaukee Mountain, Lake City (231) 839-7575 – 27 miles*
- *Snow Snake Ski, Harrison (989) 539-6583 – 28 miles*



**Walking or Hiking:** There are many trails to walk. See "The Loop" for a long scenic walk through the woods.

**Zipline:**

- *Snow Snake Zipline, Harrison (989) 539-6583 – 28 miles*



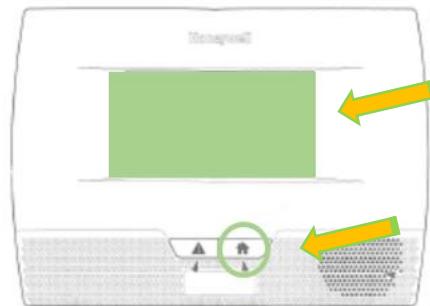
## Alarm Security System Arm / Disarm

*Before arriving at the Clam River Haven, you will be provided the code to unlock the front door, the garage, the alarm security system and the safe code in case the alarm goes off and you need to call Audio Sentry to disarm the alarm and will contact the local authorities to not come out.*

### **To Disarm:**

*After entering, immediately disarm the alarm system. You have 30 seconds to disarm and then the alarm company is alerted.*

*It is important to close the entry door before pushing any buttons or the alarm will not arm or disarm. If touch screen is dark, click anywhere on the touch screen or the green house (see green areas below).*



*The number keypad displays. You may have to press SECURITY to see the keypad. Enter your four digit code provided to you before arrival, then press DISARM. You may have to do this more than once if the keypad wasn't pressed exactly right.*

*The alarm will tell you it is disarmed and the beeping will silent. You have successfully disarmed the security system.*

*If the system continues to beep or the alarm is activated, continue to try to disarm. Even if the alarm starts blaring, keep trying to disarm.*

*Here is the number if you need to call to get assistance to disarm. Use the landline phone:*

*Audio Sentry Alarm System      +1 (888) 294-2941*

*Tell Audio Sentry who you are, what your code is, and what the safe code is that you were provided. Audio Sentry will assist you to disarm the system.*

**To Arm:**

*Have everyone and everything out of the Clam River Haven before arming the system. **All entry doors must be shut and locked** (including garage doors). You have 45 seconds after arming the system to open the door and exit.*

*Click anywhere on the touch screen or the green house (see diagram above). The number keypad will display. You may have to press **SECURITY** to see the keypad. Press **STAY AWAY**, then enter your same four digit code you used to disarm when you arrived.*

*The alarm will tell you it is arming and to exit the building now. You may have to do this more than once if the keypad wasn't pressed exactly right.*

*Open the door, make sure it is locked (red light will flash), then exit the building and shut the door. From the outside, after the door is shut, try opening the door to make sure it is locked. Listen for the 45 seconds to finish and the noise to stop. You have successfully armed the security system.*

*If you get a code "Ready to Arm - Error Code," wait 15 minutes without touching the alarm and try again.*



## Communications and Media

**Cottage phone:** The Clam River Haven now has a phone via the internet, that can be used to call anywhere in the USA (both incoming and outgoing) for no charge to renters.

***Clam River Haven Phone    +1 (231) 825-0144***

**Mobile Calling:** Personal mobile devices have very little phone coverage. Plan on almost zero coverage. If you need to make a phone call from your personal phone, getting a signal is sometimes a challenge. The reason is the local township currently has a ban on cell phone towers, so the signal has to travel far to get to the Clam River Haven. In the twin bedroom, there is a signal range extender, which helps to strengthen the signal. The light should be green to be working properly. If the light is red, or flashing, unplug the power at the back of the unit and plug it back in to reset. Restarting your cell phone can also help get better signal. Outside, the best areas for signal are high on a hill, such as in front of the Public Access on Strawberry Avenue or a little farther down Strawberry Avenue in front of the white house on the curve where Strawberry changes to Pierce Road. Sometimes halfway down the driveway gets signal. Inside the cottage, try sitting on the brown Lazyboy chair closest to the dining room table or in the veranda closer to the driveway. Remember that texting requires much less signal and often texting can go through. There is very good cell signal in Marion (16 minute drive).

**Internet:** Internet service via satellite is offered for an extra fee. We would then increase the satellite plan coverage and provide you the pass code information.

10 GB coverage = \$30

20 GB coverage = \$60

50 GB coverage = \$110

Even with the purchase of the internet, using the internet for video games or downloading music is not allowed.

Complimentary Internet is provided at the Marion Library.

Marion Public Library  
120 E. Main Street  
Marion, MI 49665  
(231) 743-2421

## Radio Stations:

| Radio Stations |           |                 |  |                            |
|----------------|-----------|-----------------|--|----------------------------|
| Call sign      | Frequency | City of License | Licensee                               | Format                     |
| <u>WGRY-FM</u> | 101.1 FM  | Roscommon       | Blarney Stone Broadcasting, Inc.       | Sports                     |
| <u>WPRJ</u>    | 101.7 FM  | Coleman         | Spirit Communications, Inc.            | Contemporary Christian     |
| <u>WYBR</u>    | 102.3 FM  | Big Rapids      | Mentor Partners, Inc.                  | Hot Adult Contemporary     |
| <u>WGDN-FM</u> | 103.1 FM  | Gladwin         | Apple Broadcasting Company, Inc.       | Country                    |
| <u>WTCM-FM</u> | 103.5 FM  | Traverse City   | WTCM Radio, Inc.                       | Country                    |
| <u>WCKC</u>    | 107.1 FM  | Cadillac        | The Drive - Northern Star Broadcasting | Classic Rock               |
| <u>WCDY</u>    | 107.9 FM  | McBain          | Up North Radio, LLC                    | Hot Adult Contemporary     |
| <u>WIAA</u>    | 88.7 FM   | Interlochen     | Interlochen Center for the Arts        | Classical                  |
| <u>WBHL</u>    | 90.7 FM   | Harrison        | West Central Michigan Media Ministries | Religious                  |
| <u>WOLW</u>    | 91.1 FM   | Cadillac        | Northern Christian Radio, Inc.         | Contemporary Christian     |
| <u>WJZQ</u>    | 92.9 FM   | Cadillac        | WKJF Radio, Inc.                       | Pop Contemporary Hit Radio |
| <u>WKQZ</u>    | 93.3 FM   | Midland         | Radio License Holding CBC, LLC         | Active Rock                |
| <u>WKAD</u>    | 93.7 FM   | Harrietta       | Cadillac Broadcasting, LLC             | Sports                     |
| <u>WCEN-FM</u> | 94.5 FM   | Hemlock         | Moose - NM License, LLC                | Country                    |
| <u>WCFX</u>    | 95.3 FM   | Clare           | Grenax Broadcasting, LLC               | Top 40 (CHR)               |
| <u>WLXV</u>    | 96.7 FM   | Cadillac        | MacDonald Garber Broadcasting, Inc     | Hot Adult Contemporary     |
| <u>WDEE-FM</u> | 97.3 FM   | Reed City       | Steven V. Beilfuss                     | Oldies                     |
| <u>WKLT</u>    | 97.5 FM   | Kalkaska        | Northern Radio of MIchigan, Inc.       | Classic Rock               |
| <u>WMRX-FM</u> | 97.7 FM   | Beaverton       | Steel Broadcasting, Inc                | Soft AC/Oldies             |
| <u>WUPS</u>    | 98.5 FM   | Houghton Lake   | UPS - Coltrace Communications, Inc.    | Classic Hits               |
| <u>WATT</u>    | 1240 AM   | Cadillac        | MacDonald Garber Broadcasting, Inc     | News Talk Information      |
| <u>WGDN</u>    | 1350 AM   | Gladwin         | Apple Broadcasting Company, Inc.       | News Talk Information      |
| <u>WLJW</u>    | 1370 AM   | Cadillac        | Good News Media, Inc. (Old Board)      | Religious                  |

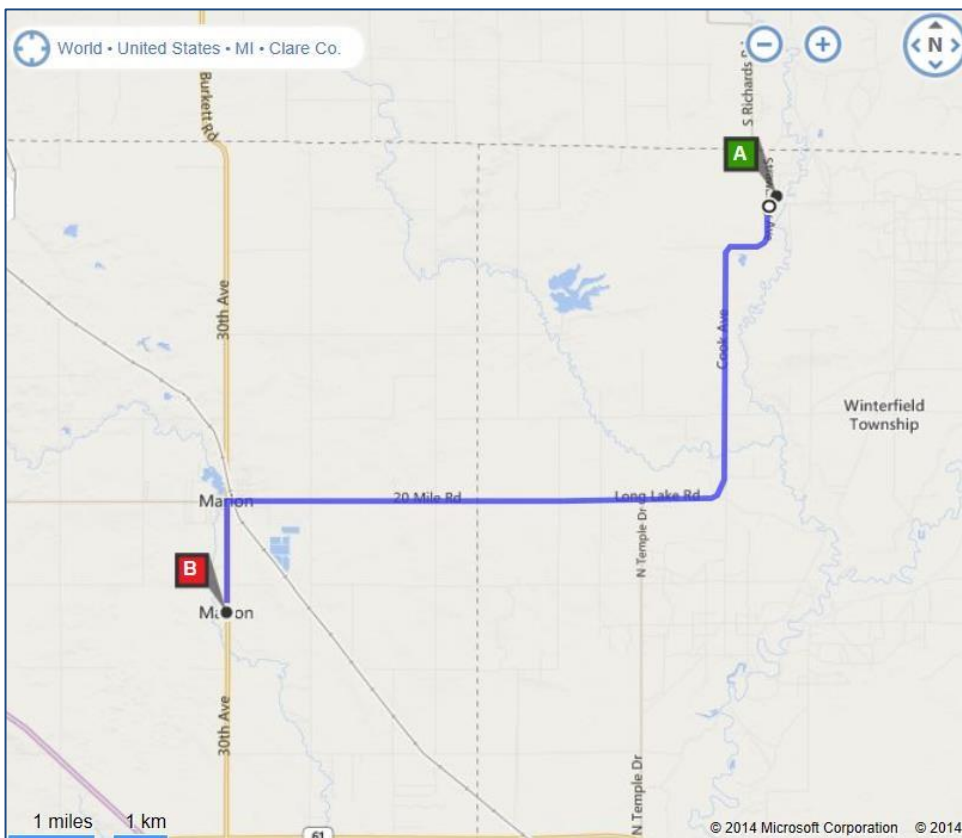
**Dish Network Satellite Television:** Listed below are the channels that are available. To turn on/off the television, press the **two red circle buttons** on the Dish Network remote. There are movies and cartoons saved to DVR and can be viewed for free. You are NOT able to download any movies from Dish Network.

| Dish Network Channels |                       |         |                              |                                  |       |
|-----------------------|-----------------------|---------|------------------------------|----------------------------------|-------|
| 7                     | WPBN                  | 220     | Mercury Television           | MALL                             |       |
| 9                     | WWTV                  | 221     | Live Shopping                | MARKT                            |       |
| 27                    | WCMV                  | 222     | Home Shopping Network        | HSN                              |       |
| 29                    | Local News and Sports | WGTU    | 223                          | SRN                              | NEWSX |
| 33                    | WFQX                  | 224     | Shop                         | RCTV                             |       |
| 71                    | Idea TV               | IDEA    | 225                          | Collectables & Treasures         | SALE  |
| 72                    | You TV                | YOUTV   | 226                          | HSN2                             | HSN2  |
| 81                    | In Country Television | ICTV    | 227                          | Jewelry Television               | JTV   |
| 82                    | FETV                  | FETV    | 228                          | ShopNBC                          | SHPHQ |
| 83                    | Jewelry Television    | JTV     | 229                          | Gem Shopping Network             | GEMS  |
| 84                    | Home Shopping Network | HSN     | 230                          | In Country Television            | ICTV  |
| 85                    | Shop                  | RCTV    | 243                          |                                  | WUVO  |
| 86                    | Mercury Television    | MALL    | 255                          | Shop                             | QVC+  |
| 87                    | Rocks TV              | ROCKS   | 256                          | Prayer                           | PRAYR |
| 94                    | Value TV              | VALU    | 257                          | SonLife Broadcasting Network     | SBN   |
| 95                    | Deal                  | DEAL    | 258                          | Church Channel                   | CHRCH |
| 101                   | DISH Network FYI      | DISH101 | 259                          | Inspiration Network              | INSP  |
| 107                   | Comedy Central        | COMEDY  | 260                          | TBN                              | TBN   |
| 110                   | Food Network          | FOOD    | 261                          | Eternal World Television Network | EWTN  |
| 112                   | HGTV                  | HGTV    | 262                          | Angel One                        | ANGEL |
| 115                   | FYI                   | FYI     | 263                          | Daystar                          | DYSTR |
| 117                   | TV Guide Network      | TVGN    | 264                          | Kids & Teens Television          | KTV   |
| 120                   | History               | HIST    | 266                          | CCTV-9                           | ANGL2 |
| 123                   | Mall                  | Mall    | 267                          | Angel Two                        | CTN   |
| 127                   | OXYGN                 | 268     | Christian Television Network | IMPCT                            |       |
| 128                   | WE                    | 274     | Liquidation Channel          | LC                               |       |
| 134                   | SHPHQ                 | 275     | You TV                       | YOUTV                            |       |
| 137                   | QVC                   | 279     | CCTV News                    | CCNEW                            |       |
| 139                   | TBS                   | 280     | RT America News              | RT                               |       |
| 145                   | ESPNA                 | 286     | NASA                         | NASA                             |       |
| 146                   | ESPNA                 | 393     | PRST                         | PRST                             |       |
| 149                   | FTBLL                 | 829     | DISH Network FYI             | DISH101                          |       |
| 153                   | MLBSZ                 | 875     | Value TV                     | VALU                             |       |
| 155                   | NFLRZ                 | 883     | Idea TV                      | IDEA                             |       |
| 161                   | MTV2                  | 916     |                              | WPIX                             |       |
| 166                   | CMT                   | 7150    |                              | WBTV                             |       |
| 167                   | AXS                   | 7151    |                              | WWTV                             |       |
| 175                   | Boomerang             | BOOM    | 7152                         | WPBN                             |       |
| 179                   | The Hub Network       | HUB     | 7153                         | WFQX                             |       |
| 183                   | TLC                   | 7156    |                              | WCMV                             |       |
| 185                   | Hallmark Channel      | HLMRK   | 9403                         | BYUTV                            | BYUTV |
| 203                   | BITV                  | 9410    | LinkTV                       | LINK                             |       |
| 209                   | MSNBC                 | MSNBC   | 9415                         | Free Speech TV                   | FSTV  |
| 210                   | C-SPAN                | CSPAN   | 9422                         | AXS TV                           | AXS   |
| 213                   | WEATI                 | 9532    | In Country Television        | ICTV                             |       |
| 214                   | Weather Channel       | WEATH   | 9642                         | FETV                             | FETV  |
| 217                   | ION West              | BUZZ    | 9643                         | Rocks TV                         | ROCKS |
| 219                   | America Live          | ALIVE   | 9644                         | Value TV                         | VALU  |

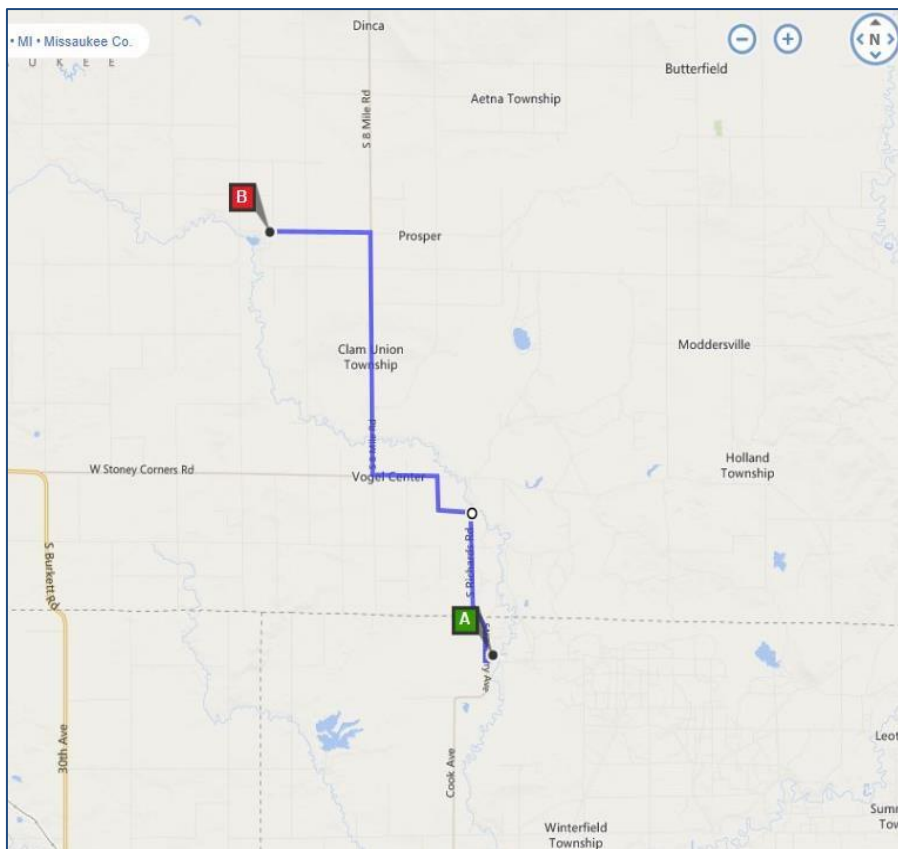
**The following pages contain directions from the Clam River Haven to:**

- Marion
- Falmouth
- Leota
- Vogel Center
- McBain
- Hospital - Munson Healthcare Cadillac Hospital, Cadillac
- The "Loop"
- Spot Deer at Dusk 40 Minute Tube Ride down the Clam River
- 20 Minute Tube Ride down the Clam River
- 45 Minute Kayak/Canoe Ride down the Clam River
- 2 Hour Kayak/Canoe Ride down the Clam River
- 3-3.4 Hour Kayak/Canoe Ride starting at the Clam River Haven
- 5 Hour Kayak Ride starting at the Clam River Haven and merging into the Muskegon River

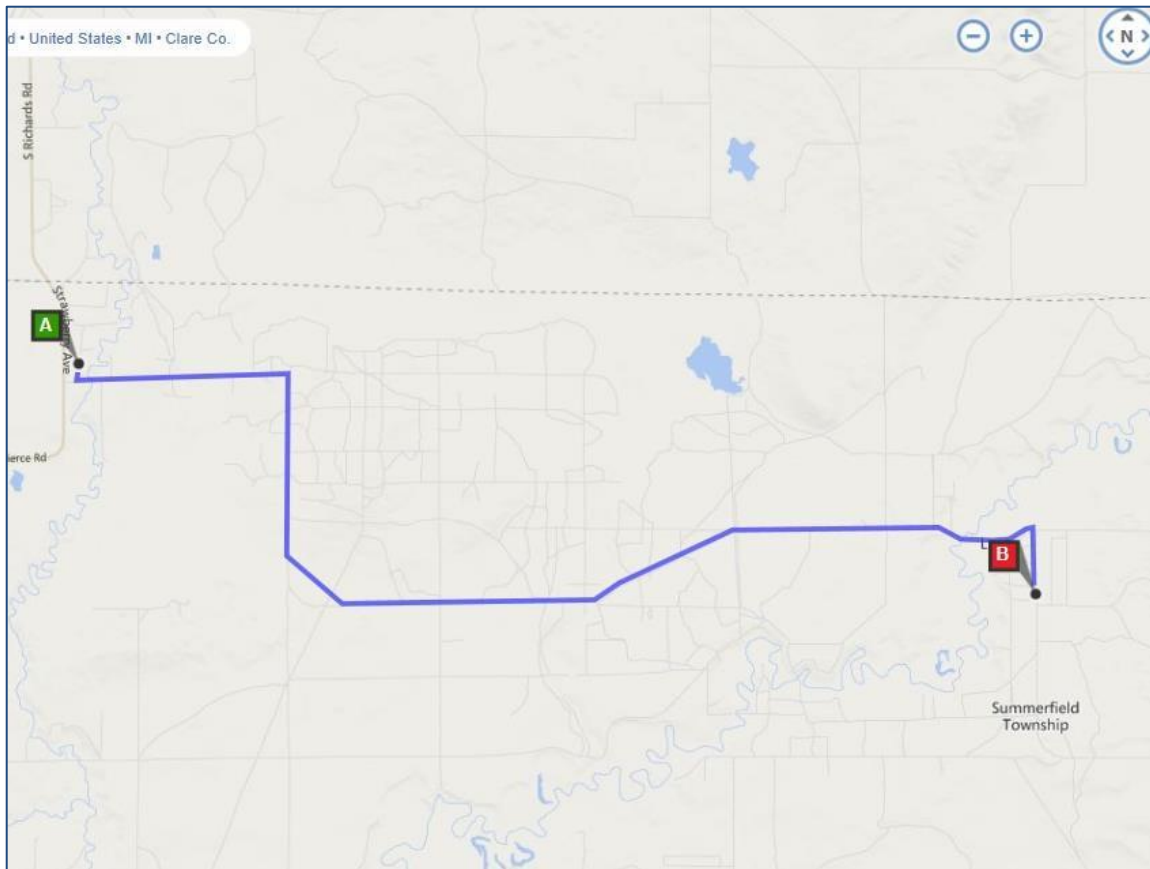
- **Directions from the Clam River Haven to Marion, MI:**  
11.2 miles away, or a 16 minute drive
  - Depart Mulder Dr toward Keehn Rd - 0.1 mi
  - Turn right onto Keehn Rd - 502 ft
  - Turn left onto Strawberry Ave - 0.4 mi
  - Road name changes to Pierce Rd - 0.4 mi
  - Keep left toward Cook Ave - 0.1 mi
  - Bear left onto Cook Ave - 2.8 mi
  - Road name changes to Long Lake Rd - 3.0 mi
  - Road name changes to 20 Mile Rd - 3.0 mi
  - Turn left onto M-66 / S Mill St - Shell on the corner - 1.3 mi
  - Arrive at Marion, MI



- **Directions from the Clam River Haven to Falmouth, MI:**  
9.5 mi, 13 min driving
  - Depart Mulder Dr toward Keehn Rd - 0.1 mi
  - Turn right onto Keehn Rd - 502 ft
  - Turn right onto Strawberry Ave - 0.7 mi
  - Road name changes to S Richards Rd - 1.5 mi
  - Road name changes to E Strief Rd - 0.5 mi □ Road name changes to S 9 Mile Rd - 0.5 mi
  - Turn left onto E Stoney Corners Rd - 1.0 mi
  - Turn right onto S 8 Mile Rd - 3.5 mi
  - Turn left onto E Prosper Rd - 1.5 mi
  - Arrive at 456 E Prosper Rd

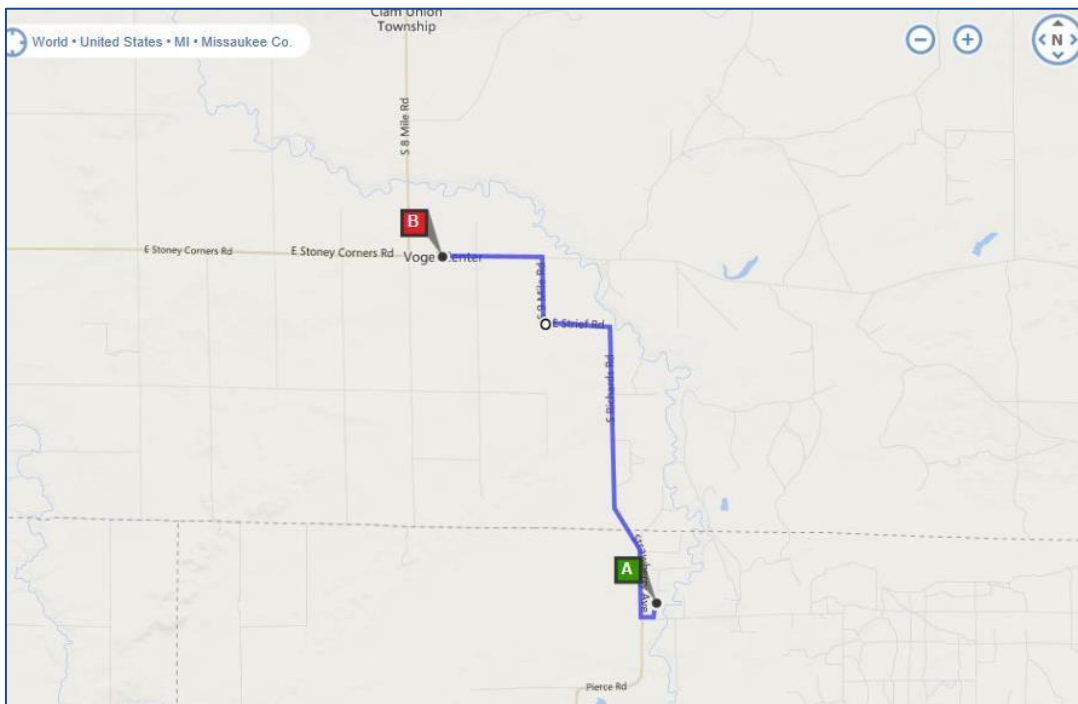


- **Directions from the Clam River Haven to Leota, MI:**  
8.4 mi, 22 min driving
  - Depart Mulder Dr toward Keehn Rd - 0.1 mi
  - Turn left onto Keehn Rd - 1.4 mi
  - Turn right onto McKinley Rd - 1.2 mi
  - Turn left onto Wilson Rd - 2.2 mi
  - Road name changes to Muskegon Rd - 3.1 mi
  - Turn right onto N Finley Lake Ave - 0.4 mi
  - Arrive at 10141 N Finley Lake





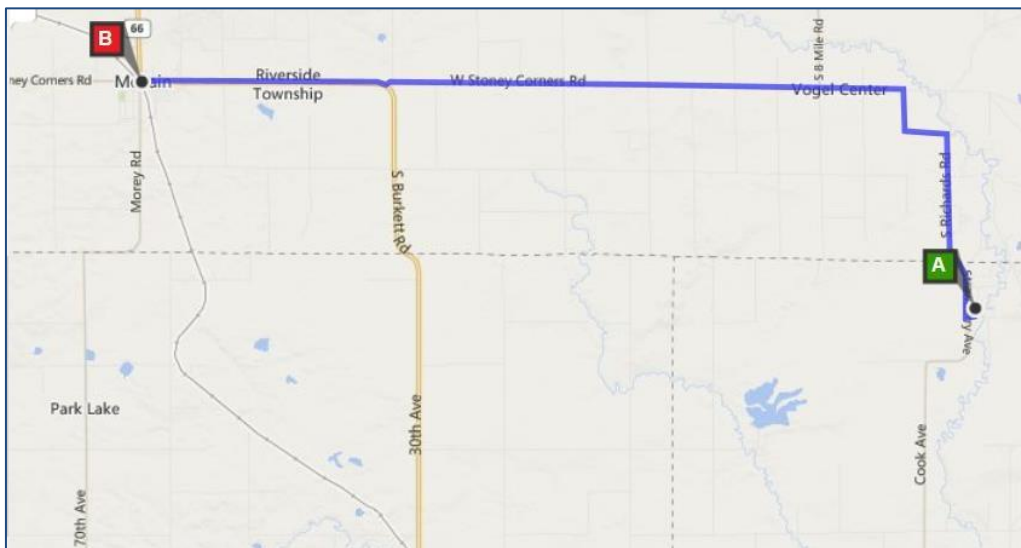
- **Directions from the Clam River Haven to Vogel Center, MI:**  
4.2 mi, 5 min driving
  - Depart Mulder Dr toward Keehn Rd - 0.1 mi
  - Turn right onto Keehn Rd - 502 ft
  - Turn right onto Strawberry Ave - 0.7 mi
  - Road name changes to S Richards Rd - 1.5 mi
  - Richards Road curves sharply to the left and changes to Streif road (note the Alpaca farm on the right just before the turn). Take Streif road 0.5 mi
  - Road name changes to S 9 Mile Rd - 0.5 mi
  - Turn left onto E Stoney Corners Rd (Hoekwater Park is on corner) - 0.7 mi
  - Arrive at Vogel Center, MI



- **Directions from the Clam River Haven to McBain, MI:**  
12.4 mi, 15 min driving

- Depart Mulder Dr toward Keehn Rd - 0.1 mi
- Turn right onto Keehn Rd - 502 ft
- Turn right onto Strawberry Ave - 0.7 mi
- Road name changes to S Richards Rd - 1.5 mi
- Road name changes to E Strief Rd - 0.5 mi □ Road name changes to S 9 Mile Rd - 0.5 mi
- Turn left onto E Stoney Corners Rd - 3.0 mi
- Road name changes to W Stoney Corners Rd - 3.1 mi
- Turn right onto M-66 / W Stoney Corners Rd - 2.9 mi
- Arrive at McBain, MI

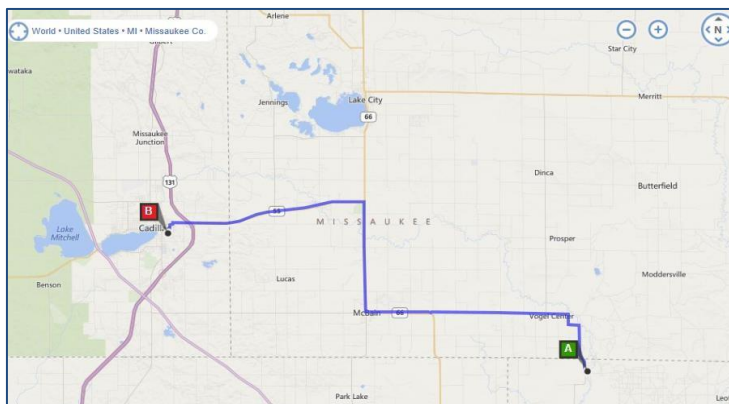
The last intersection is N Grace St. If you reach N Pine St, you've gone too far.



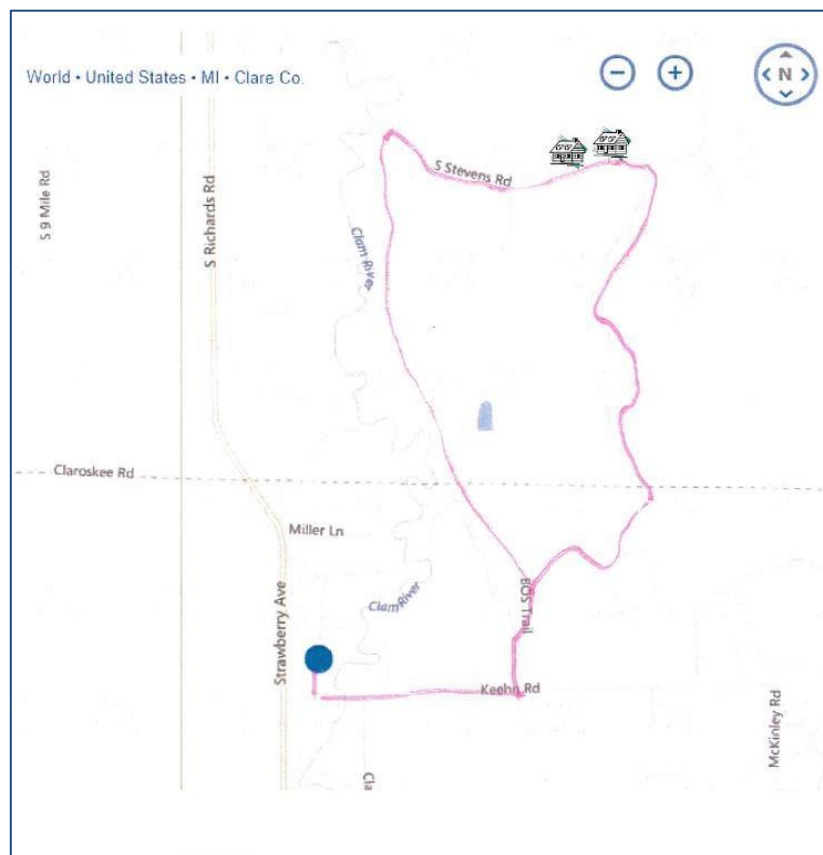
▪ **Directions from the Clam River Haven to Munson Healthcare Cadillac Hospital, Cadillac, MI:**

26.7 mi, 35 min driving

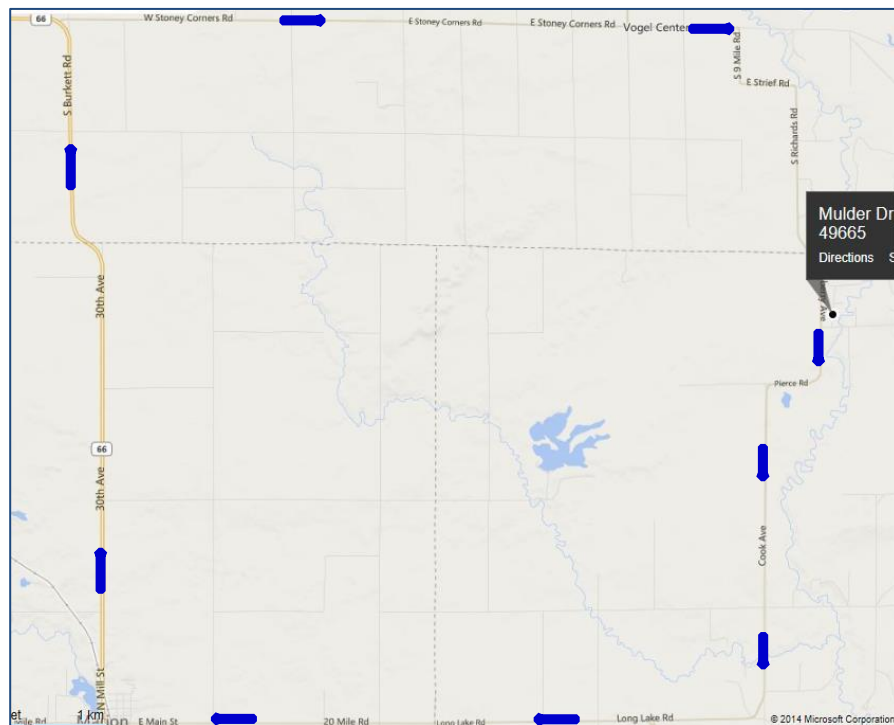
- Depart Mulder Dr toward Keehn Rd - 0.1 mi
- Turn right onto Keehn Rd - 502 ft
- Turn right onto Strawberry Ave - 0.7 mi
- Road name changes to S Richards Rd - 1.5 mi
- Road name changes to E Strief Rd - 0.5 mi □ Road name changes to S 9 Mile Rd - 0.5 mi
- Turn left onto E Stoney Corners Rd - 3.0 mi
- Road name changes to W Stoney Corners Rd - 3.1 mi
- Turn right onto M-66 / W Stoney Corners Rd - 3.0 mi
- Road name changes to W Stoney Corners Rd - 3.1 mi
- Turn right onto M-66 / W Stoney Corners Rd - 2.9 mi
- Turn right to stay on M-66 / S Morey Rd - 5.0 mi
- Turn left onto M-55 / W Blue Rd - Pass CHEVROLET in 0.1 mi - 8.1 mi
- Road name changes to E M 55 - 0.1 mi
- Road name changes to E Division St - 0.4 mi
- Turn left onto S Carmel St - 370 ft
- Turn right onto E Chapin St - 0.1 mi
- Turn left onto Lester St - 0.3 mi
- Turn right onto Hobart St - 454 ft
- Arrive at 400 Hobart St, Cadillac, MI



- **Directions from the Clam River Haven to take “The Loop”**  
~20 minutes by golf cart or take a 6 mile hike
  - Depart Mulder Dr toward Keehn Rd - 0.1 mi
  - Turn left onto Keehn Rd to BOS Trail (pass the Clam River, over the first hill and near the top of the second hill where the mailboxes are, turn left)
  - Follow the main trail all the way around until you see two cottages on the left in plain sight. Just after the second cottage, take the trail to the right and continue. Eventually, you will connect back on the same trail you started on.
  - Turn right onto Keehn Rd to Mulber Dr.
  - Right on Mulber Dr three cabins to Clam River Haven.



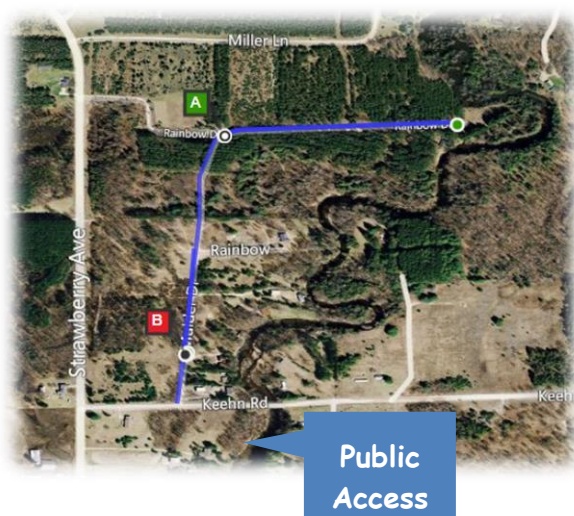
- **Driving Directions to spot Deer at Dusk:**
  - Depart Mulder Dr toward Keehn Rd
  - Turn right onto Keehn Rd
  - Turn left onto Strawberry Ave (turns into Pierce Road, then Cook Rd)
  - Turn right onto Long Lake Road
  - Turn right onto N. Mill Street (turns into 30<sup>th</sup> Ave, then Burkett Ave.)
  - Turn right onto W Stoney Corners Rd (turns into E Stoney Corners)
  - Turn right onto S. 9 Mile Road
  - Turn left onto E. Strief Rd
  - Turn right onto S. Richards Rd (turns into Strawberry Ave)



## ▪ 20 Minute Tube Ride:

(Strong recommendation to wear water shoes or tennis shoes - Flip flops will be lost. Water is pure, however, there are sharp clams and rocks.) Kayak/Canoe trailer requires a 2-inch ball hitch.

- Walk: Take Mulber north to the end of the obvious road.
- Turn right towards the river to Frank and Melissa's cabin. Trent is their son's name.
- Carry your tubes to the river and ask permission to drop in the river as you walk by.
- Note: If you are a novice at this, get in the water first, then take your tube. Water will be brisk and refreshing! Place the tube (valve down) upstream and simply sit back into the tube.
- Clam River Haven will be on your right.
- Return the tubes to the garage immediately so they don't dry out from the sun.
- If you pass the cabin, continue just past the bridge and exit to your first opportunity on the right at the Public Access. Walk up the Public Access driveway and turn right at Strawberry Ave. Turn right again at Keehn, then left at Mulber.





▪ **40 Minute Tube Ride:**

(Strong recommendation to wear water shoes or tennis shoes - Flip flops will be lost. Water is pure, however, there are sharp clams and rocks.) Kayak/Canoe trailer requires a 2-inch ball hitch.

If you want to order a drop off of equipment and people up the river, there is a \$45 cash charge. Call Linda Helfmann if interested in ordering this service.

- Driving: Take Mulber south to Keehn Road.
  - Right on Keehn to Strawberry Ave.
  - Right on Strawberry Ave. approx. 1 mile to Miller Road.
  - Right on Miller Road (drive slow because it gets really bumpy). When Miller Road turns to the left, you will see a row of cottages. Pick any cottage that isn't occupied or choose the second cottage if there are cars at every cabin and park next to the road.
  - Carry your tubes to the river and ask permission to drop in the river as you walk by.
  - Note: If you are a novice at this, get in the water first, then take your tube. Water will be brisk and refreshing! Place the tube (valve down) upstream and simply sit back into the tube.
  - Clam River Haven will be on your right.
  - Return the tubes to the garage immediately so they don't dry out from the sun.
  - If you pass the cabin, continue just past the bridge and exit to your first opportunity on the right at the Public Access. Walk up the Public Access driveway and turn right at Strawberry Ave. Turn right again at Keehn, then left at Mulber.





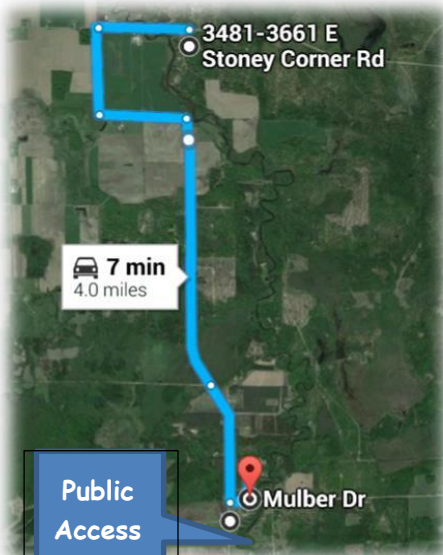
## Two Hour Kayak/Canoe Ride (Stoney Corners):

(Strong recommendation to wear water shoes or tennis shoes - Flip flops will be lost. Water is pure, however, there are sharp clams and rocks.) Kayak/Canoe trailer requires a 2-inch ball hitch.

If you want to order a drop off of equipment up river, there is a \$45 cash charge. Call Linda Helfmann if interested in ordering this service with plenty of advance notice.

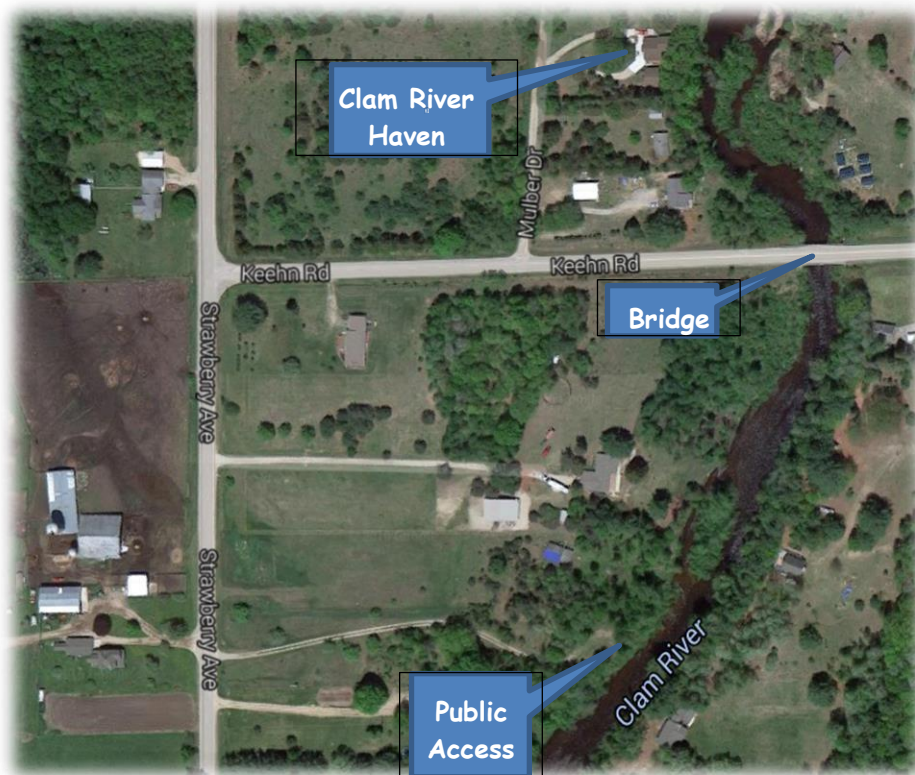


- Drive on Mulber south to Keehn Road.
- Right on Keehn to Strawberry Ave.
- Right on Strawberry Ave., which changes to Richards Road.
- Richards Road curves sharply to the left and changes to Streif road (note the Alpaca farm on the right just before the turn).
- A sharp right turn changes Streif Road to 9 Mile Road. Continue on 9 Mile Road to next stop sign, which is Stoney Corners (Hoekwater Park is on left).
- Turn right on Stoney Corners approx. 0.25 miles to the Clam River. There is a small parking area east of the river with access to the river.



Note: If you are a novice at this, get in the water first, then bring in your vessel to the river. Water will be brisk and refreshing! It is recommended that the life preserver cushion, cooler, and other belongings are bungied or tied to the vessel.

- Clam River Haven will be on your right.
- Carry the kayaks/canoes up the stairs or use the pulley system. Place the vessels, paddles and preservers in the garage immediately so they don't blow down into the river.
- If you pass the cabin, continue just past the bridge and exit to your first opportunity on the right at the Public Access. Walk up the Public Access driveway and turn right at Strawberry Ave. Turn right again at Keehn, then left at Mulber.



## Three to Three and a half Hour Kayak/Canoe Ride (from Clam River Haven to Haskell Lake Road):

(Strong recommendation to wear water shoes or tennis shoes - Flip flops will be lost. Water is pure, however, there are sharp clams and rocks.) Kayak/Canoe trailer requires a 2-inch ball hitch.



If you want to order a drop off of equipment and people up the river, there is a \$45 cash charge. Call Linda Helfmann if interested in ordering this service with plenty of advance notice.

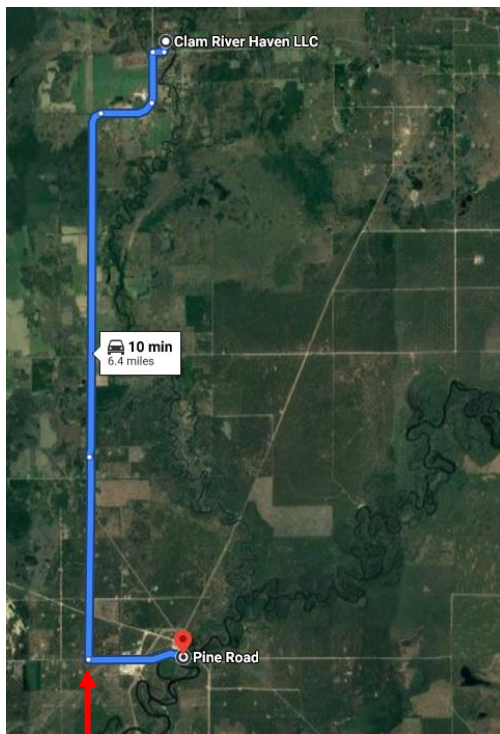
- Drive on Mulber south to Keehn Road.
- Right on Keehn to Strawberry Ave.
- Left on Strawberry Ave., approx. 4 miles).
- Turn Left on Haskell Lake Road (township hall is on corner) and the Clam River will be less than 2 miles down. There is a small parking area with access from the river.
- Before your journey, don't forget to drop a car at Haskell Lake Road, then bring back the trailer and vehicles to retrieve the kayaks and people.



## Five Hour Kayak/Canoe Ride (from Clam River Haven to Church Bridge on Pine Road - Clam River turns into the Muskegon River) GPS Latitude and Longitude 44.081884-85.013064

(Strong recommendation to wear water shoes or tennis shoes - Flip flops will be lost. Water is pure, however, there are sharp clams and rocks.) Kayak/Canoe trailer requires a 2-inch ball hitch.

If you want to order a drop off of equipment and people up the river, there is a \$45 cash charge. Call Linda Helfmann if interested in ordering this service with plenty of advance notice.



There is a white Consumers Power sign on corner



- Drive on Mulber south to Keehn Road.
- Right on Keehn to Strawberry Ave.
- Left on Strawberry Ave., approx. 5 miles towards Marion - road changes names from Strawberry to Pierce to N Cook Avenue).
- When there is a large turn in the road and choice to turn left, turn left onto Cook Avenue approx. 2 miles.
- Turn Left on Pine Road (white Consumers Power sign on the corner).
- Church Bridge is less than five miles just past the Consumers Power buildings)
- There is a small parking area with access from the river.
- Before your journey, don't forget to drop a vehicle at Pine Road, then bring back the trailer and vehicles to retrieve the kayakers and people.

## Other Info

**Air Conditioning, Furnace, Heaters and Fans:** Please adjust the thermostat (located in the hallway) accordingly for your comfort. When checking out, please turn the thermostat off in the warmer weather or down to 55 degrees in freezing weather. To change the thermostat temperature, simply turn the entire thermostat clockwise or counterclockwise to change the temperature. To change from heat to air conditioning, press on the center, and adjust in the mode section. Text Linda Helfmann if you are having difficulty adjusting the Next thermostat and she will set it on her phone to your desired temperature. There are also several fans and portable heaters for your use wherever you like.

**Electricity:** The Clam River Haven is equipped with circuit breakers. Being in the country, the power often goes out, 99.9% of the time for a few seconds, for no apparent reason - just enough to trip all the clocks. There have been times that the power outage has also tripped a circuit breaker. If only some power has gone out and not all the power, check the circuit breakers and GFCIs to see if they were tripped. There is an emergency flashlight located in the laundry room to use if the power goes out.

**Coffee, Spices, Staples and Kitchen Equipment:** The cupboards and fridge are stocked with normal kitchen spices, condiments, coffee, and staples. Please be respectful and return everything to where you found it and in clean condition for the next person to use. Here is a list of some items that are in the kitchen so you can plan:

- 14 Cup Auto-drip Coffee Maker
- 30 Cup Percolator (2 cups of coffee for 30 cups)
- Blender
- 4-Slice Toaster

- Microwave
- Large Pancake Griddle (also good for frying bacon and sausage)
- Electric and Hand Mixers
- Large Slow Cooker / Roaster
- Large electric fry pan with cover
- Pots, pans, cookie sheet, casserole dishes, roasters
- Hot Air Popcorn Popper
- Magic Bullet Blender

**Insect Repellant:** There is some insect repellant stored in the utility room, but you should bring your own. Please do not spray insect repellant indoors. The oils make the floor slippery and dangerous and it smells bad. Some measures have been taken to reduce the population of mosquitos and other pests, however, this is Michigan country living and mosquitos are unavoidable. Deer ticks are rare on this property, but are still there as the deer walk through the property. Watch your clothing - if you find one, there may be more.

**Dogs and Other Pets:** No animals are allowed inside the Clam River Haven. If we find evidence of a pet, a \$350 extra cleaning fee will be charged and it will be the tenant's responsibility for any damages and extra cleaning charges to professionally remove the allergens, odors and pet hair.

**Linens, Blankets, Pillows and Towels:** No need to remove the sheets from the beds - just leave them messy so we know which beds were slept in. Used towels should go in one of the hampers or left in a pile in the Laundry Room.

- There are extra sheets, blankets and pillows in the linen closet upstairs and/or the armoire. Towels are located in the cabinet above the toilet in the main bathroom and in under the vanity in the ensuite bathroom. Kitchen towels are located in the kitchen

drawer left of the sink. There may be an fee charged for overuse of linens being used to make extra beds on the sofa, floor, etc.

**Smoking:** No smoking indoors. Ash trays are provided for outdoor smoking. Please do not leave cigarette butts on the ground. There will be an extra \$250 cleaning fee charged if indoor smoking occurs to remove the smell and the allergens.

**Spiritual Services:**

**St. Agnes Roman Catholic Church (Sunday 10:00 a.m.)**

603 E. Main St.

Marion, MI 49665

(231) 743-6401

**Vogel Center Christian Reformed Church (Sunday 9:30 a.m. & 11:30 a.m.)**

(Part of the Christian Reformed Church in North America denomination of churches)

1829 E Stoney Corners Road

Mc Bain MI 49657

(231) 825-2053

**Prosper Christian Reformed Church (Sunday 9:30 a.m.)**

(Part of the Christian Reformed Church in North America)

Corner of 8 Mile and E. Prosper Road

Falmouth, MI 49632

(231) 826-4427



**Trash:** If the trash can is full in the kitchen, please twist tie the bag and leave it in the garage. Never leave trash or food outdoors. Make sure the garage is closed at night so the animals cannot enter. More trash bags are located in the entranceway cupboard to the right. Twist ties are in the drawer with the stainless.

**Water (Drinking):** No need to bring a lot of bottled water. Although our water does come from a well, it is delicious. Test results furnished upon request.

**Wood Stove:** Make sure you know how a wood stove operates before choosing to make a fire indoors. If you have never used a wood stove before, please do not use the wood stove. Fire starters and paper are stored in the wooden cabinet between the brown Lazyboy chairs. Never leave the doors open when unattended. The iron kettle on top can be filled with water to add humidity to the air. Cooking on the stove can also be done, just like olden times.

## Restaurants:

- **Restaurants - Marion, Michigan:**

Horseshoe Bar and Restaurant  
142 E. Main Street  
(231) 743-9814

Smitty's Diner (no alcohol served)  
120 Mill, Marion, MI 49665  
(231) 930-3752

Frosty Freeze (no alcohol served)  
6201 Garfield Ave.  
(231) 743-6854

Flashback Diner (no alcohol served)  
100 E Main St  
(231) 743-2271

Shananjac's Pizza (no delivery to Clam River Haven)  
(no alcohol served)  
221 E. Main Street  
(231) 743-6275

- **Restaurants - Falmouth, Michigan:**

**Duane's Family Restaurant** (no alcohol served)

456 E Prosper Rd

(231) 826-3313

- **Restaurant - Leota, Michigan:**

**Trail's End Pub and Restaurant**

10141 N Finley Lake Ave

Harrison, MI

(989) 539-9644

- **Restaurant - McBain, Michigan:**

**Reedy's Restaurant** (no alcohol served)

106 N. Roland St. McBain, MI

(231) 825-8110

**Subway** (no alcohol sold)

205 N. Pine St. McBain, MI

(231) 825-0028

**Kelly's Pizza & Grill** (no alcohol served)

100 E. Maple St. McBain, MI

(231) 825-2244

▪ **Restaurants - Temple, Michigan:**

**Tippy Canoe Bar and Grill**

(alcohol and bar food)

501 E. Davis Street

Harrison, MI 48625

(989) 588-1228



The address says Harrison, however, it is really located in Temple, which is just off M-61 just past the Temple

General Store and before Duggan's Canoe Rental (see map below). This is the epitome of dive bar, but the prices and food are good and they sometimes have entertainment.



**Temple General Store-Pizza Balls**

**Depot** (packaged liquor, pizza and pizza balls)

8751 W Temple Dr

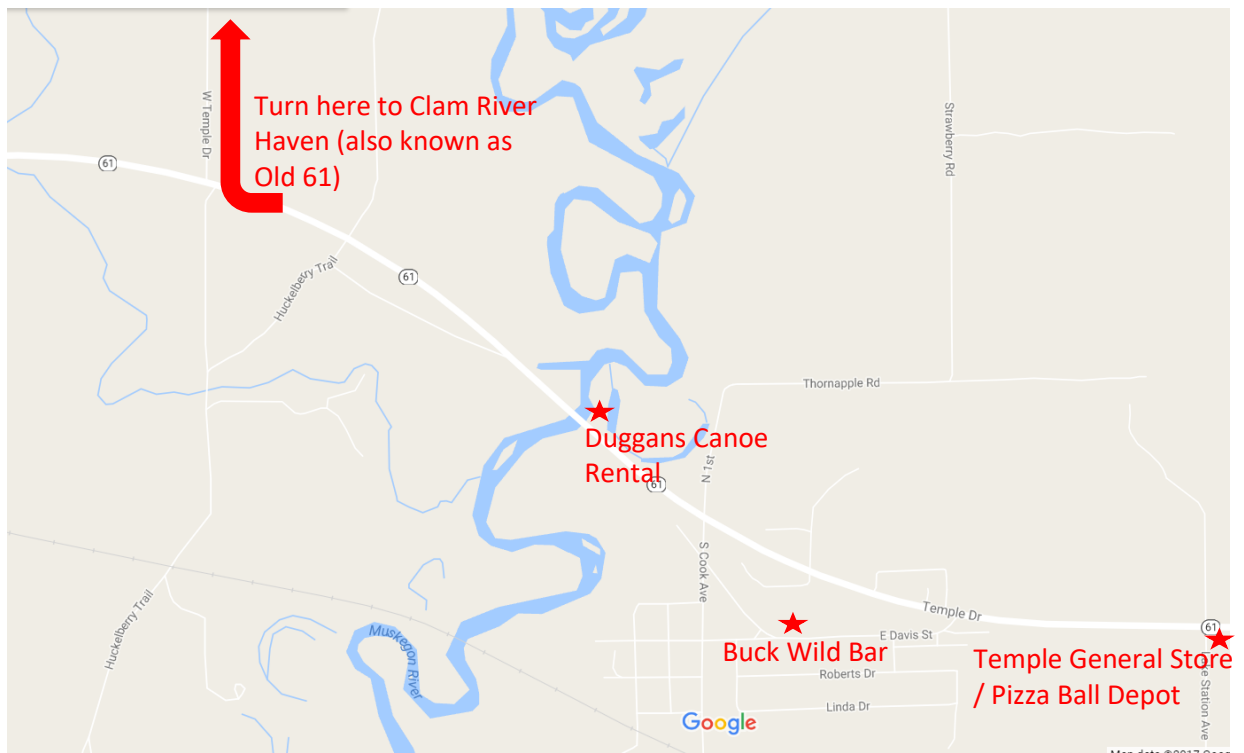
Harrison, Michigan, MI 48625

(231) 743-9722



Home of the famous pizza balls at \$1.25 each, they are hot and yummy, and often ready to purchase. They come with pepperoni filling, however, if you call ahead and order a

minimum of 6, you can have them custom made with other fillings.



## Shopping

**Shopping - Marion, MI - nearest town** - Marion has a small assortment of restaurants, a gas station, a few businesses, lumber yard, dollar store and a public library. No hard liquor can be purchased in Marion.

ValuLand Grocery Store (sells beer/wine)

401 S. Mill St.

Marion, MI

(231) 743-2873

Family Dollar Store

720 N. Mill St.

Marion, MI

(231) 743-6986

Flemming's Clothing

108 W Main St.

Marion, MI 49665

(231) 743-2461

Marion Lumber Company

(open until 1 p.m. on Saturday, closed Sunday)

606 N. Mill Street

Marion, MI

(231) 743-2416

Marathon Gas Station (open until 10 p.m.)

12723 M-115, Marion, MI 49665

Shell Gas Station (open until midnight on Saturday)

101 E Main St

Marion, MI 49665

**Shopping - Vogel Center, MI** - Nearest store - Vogel Store sells beer, wine, cigarettes, fishing and hunting licenses, ORV stickers and some food and sundries.

Vogel Store (sells beer/wine/cigarettes)  
(open daily 9:30 a.m. to 9:00 p.m. - closes Sunday at 7:00 p.m.)  
9979 S. 8 Mile Rd.  
(231) 825-2219

**Shopping - Falmouth, MI** - Ebel's processes and smokes their own meat. They have a hardware/sporting goods store and a grocery/clothing store.

Ebel's General Store (does not sell alcohol - not open on Sunday)  
420 E Prosper Road  
Falmouth, MI 49632  
(231) 826-3333

Snack Shack Party Store (sells liquor, beer and wine, cigarettes)  
Just west of Ebel's  
210 E. Prosper Road  
Falmouth, MI  
(231) 826-4199

Falmouth Co-op (sells fuel - closes at noon on Saturday and not open on Sunday)  
Just west of Ebel's  
260 E Prosper Rd  
Falmouth, MI  
(231) 826-3301



Also available to rent (2 lots north)

## **Clam River Hideaway LLC**

8319 Rainbow Trail, Marion, MI

(Next cottage up river from Clam River Haven LLC)



This booklet was printed June 2022